



# AiRCON

  catalogue



CERTIFICAT

CERTIFICADO

СЕРТИФИКАТ

認證證書

CERTIFICATE

ZERTIFIKAT



Italia

# CERTIFICATO

Nr. 50 100 12436 Rev.004

SI ATTESTA CHE / THIS IS TO CERTIFY THAT

IL SISTEMA DI GESTIONE PER LA QUALITÀ DI  
THE QUALITY MANAGEMENT SYSTEM OF

**ELKE S.r.l.**

SEDE LEGALE E OPERATIVA:  
REGISTERED OFFICE AND OPERATIONAL SITE:

**VIA XXV APRILE 202  
IT - 10042 NICHELINO (TO)**

È CONFORME AI REQUISITI DELLA NORMA  
HAS BEEN FOUND TO COMPLY WITH THE REQUIREMENTS OF

**UNI EN ISO 9001:2015**

QUESTO CERTIFICATO È VALIDO PER IL SEGUENTE CAMPO DI APPLICAZIONE  
THIS CERTIFICATE IS VALID FOR THE FOLLOWING SCOPE OF APPLICATION

**Commercializzazione di prodotti chimici, attrezzature e componenti  
per l'installazione e manutenzione di impianti di refrigerazione e  
condizionamento. Produzione di prodotti chimici per la manutenzione  
di impianti di refrigerazione e condizionamento (IAF 12, 18, 29)**

**Trade of chemical products, tools and components for the installation  
and the maintenance of refrigeration and air conditioning systems.  
Manufacturing of chemical products for the maintenance of  
refrigeration and air conditioning systems (IAF 12, 18, 29)**



SGQ N° 049A

Membro degli Accordi di Mutuo Riconoscimento  
EA, IAF e ILAC  
Signatory of EA, IAF and ILAC Mutual  
Recognition Agreements

Per l'Organismo di Certificazione  
For the Certification Body  
**TÜV Italia S.r.l.**

Validità / Validity

Dal / From: **2023-02-12**

Al / To: **2026-02-11**

*Francesco Scarlata*

**Francesco Scarlata**  
Direttore Divisione Business Assurance  
Business Assurance Division Manager

Data emissione /  
Issuing Date

**2023-02-03**

**PRIMA CERTIFICAZIONE / FIRST CERTIFICATION: 2015-03-20**

"LA VALIDITÀ DEL PRESENTE CERTIFICATO È SUBORDINATA A SORVEGLIANZA PERIODICA A 12 MESI E AL RIESAME COMPLETO DEL SISTEMA DI  
GESTIONE AZIENDALE CON PERIODICITÀ TRIENNALE"  
"THE VALIDITY OF THE PRESENT CERTIFICATE DEPENDS ON THE ANNUAL SURVEILLANCE EVERY 12 MONTHS AND ON THE COMPLETE REVIEW OF  
COMPANY'S MANAGEMENT SYSTEM AFTER THREE-YEARS"

## Our story Who are We?

Twenty years of experience, customer oriented approach, a team of young under 30 professionals with an eye to innovation and our planet: this is the winning formula of Elke.

Elke is an Italian manufacturing company based in Nichelino, Torino. Its core business is the production and trade of innovative solutions for the maintenance of the entire cold chain.

*Elke turns to 3 different markets:*

- Automotive A/C systems
- A/C systems in domestic and industrial sectors
- Domestic and industrial refrigeration

We export all over the world. Since January 2021, we are officially Authorized exporters.

We are proudly business partners of the most important manufacturers of A/C charging stations, as well as spare parts dealers and equipment suppliers. Our partners and distributors are located in more than 50 Countries all over the world.

## La nostra storia Chi siamo?

Vent'anni di esperienza, approccio orientato al cliente, un team di giovani professionisti under 30 con un occhio all'innovazione e al nostro pianeta: questa è la formula vincente di Elke.

Elke è un'azienda manifatturiera italiana con sede a Nichelino, Torino. Il suo core business è la produzione e la commercializzazione di soluzioni innovative per la manutenzione dell'intera catena del freddo.

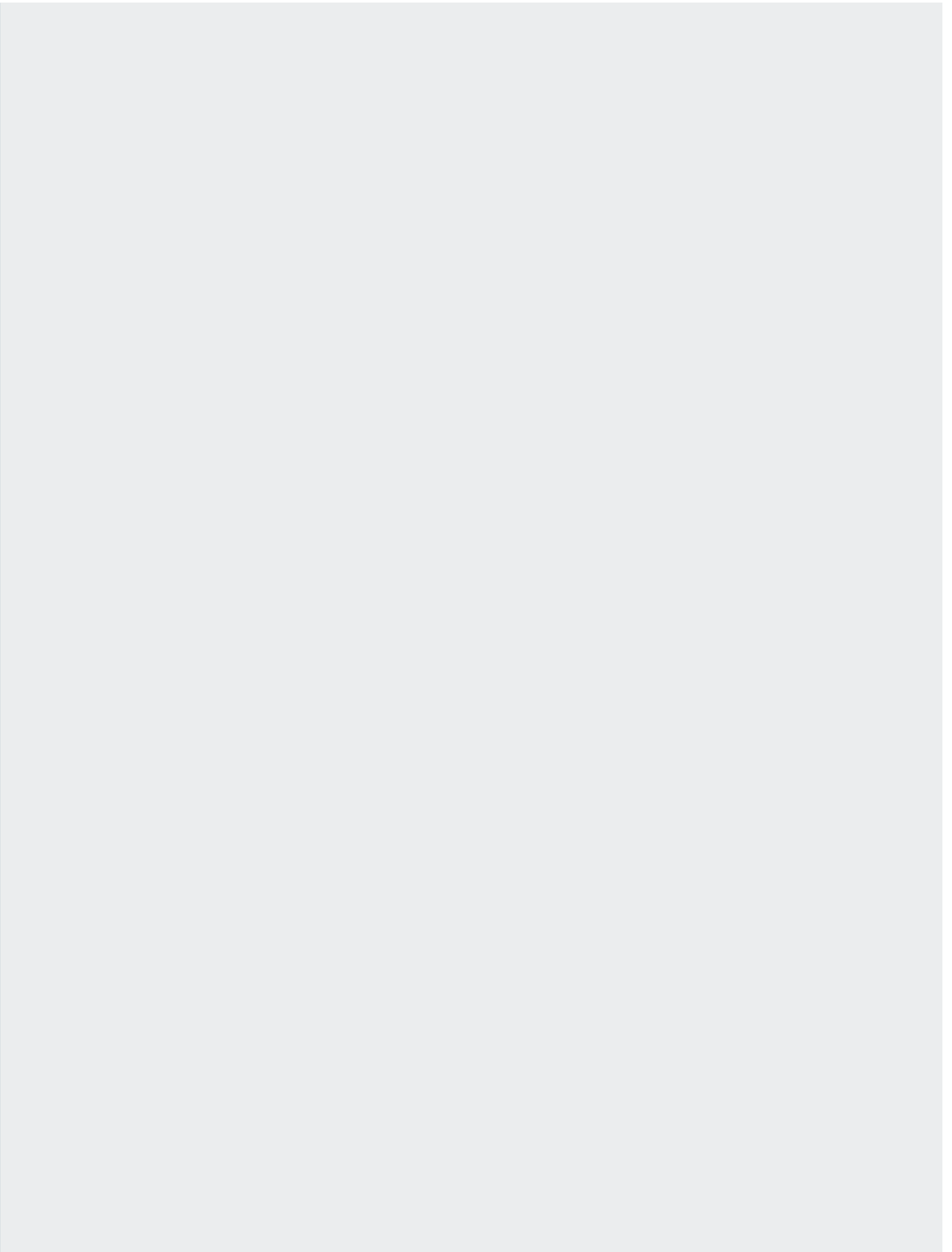
*Elke si rivolge a 3 mercati diversi:*

- Sistemi di climatizzazione automotive
- Impianti A/C nei settori domestico e industriale
- Refrigerazione domestica e industriale

Esportiamo in tutto il mondo. Da gennaio 2021 siamo ufficialmente esportatori autorizzati.

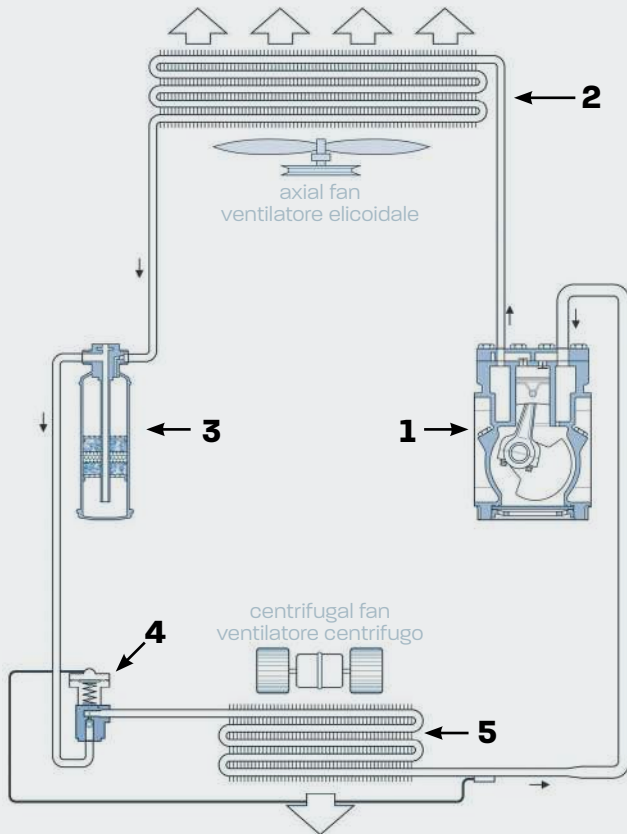
Siamo orgogliosamente partner commerciali dei più importanti produttori di stazioni di ricarica A/C, nonché rivenditori di ricambi e fornitori di attrezzature. I nostri partner e distributori sono presenti in più di 50 Paesi in tutto il mondo.





# A/C system diagram

## schema impianto A/C



### 1. COMPRESSOR / COMPRESSORE

The core of the A/C system. Through compression, it allows the refrigerant to change its state, from gaseous to liquid, and to flow through the different components of the system, high and low pressure side.

Il centro dell'impianto A/C. Attraverso la compressione, consente al refrigerante di cambiare il suo stato, da gassoso a liquido, e di fluire attraverso i diversi componenti dell'impianto, lato alta e bassa pressione.

### 2. CONDENSER / CONDENSATORE

Essential for changing the state of the coolant in the system, it is positioned in front of the engine cooling radiator. The function of the condenser is to ensure that the state of the refrigerant changes from gaseous to liquid (condensation), through the transfer of heat from the refrigerant to the ambient air.

Essenziale per modificare lo stato del refrigerante nel sistema, è posizionato anteriormente rispetto al radiatore di raffreddamento del motore. La funzione del condensatore è quella di far sì che lo stato del refrigerante cambi da gassoso a liquido (condensazione), attraverso la cessione di calore del refrigerante all'aria dell'ambiente.

### 3. DRYER FILTER

#### FILTRO ESSICCATORE

It is used to filter particles and debris that flow into the circuit and absorb any humidity. Additionally, it also stores oil and coolant.

Serve per filtrare particelle e detriti che fluiscono nel circuito e assorbire l'eventuale umidità. Inoltre, immagazzina anche olio e refrigerante.

### 4. THERMAL EXPANSION VALVE (TXV) VALVOLA DI ESPANSIONE TERMICA (TXV)

It guarantees the correct operating parameters of the A/C system as it controls the quantity of refrigerant released to the evaporator. The TXV separates the high and low pressure sides and guarantees an optimal operation of the system, with a yield corresponding to the cold air production needs.

Garantisce i parametri di funzionamento corretti dell'impianto A/C poiché controlla la quantità di refrigerante rilasciato all'evaporatore. Il TXV separa i lati di alta e bassa pressione e garantisce il funzionamento ottimale dell'impianto e una resa corrispondente alle esigenze di produzione di aria fredda.

### 5. EVAPORATOR / EVAPORATORE

It guarantees the change of state of the refrigerant, from liquid to gaseous (evaporation). During the process, the blown air flows across the surface of the evaporator and gives off heat to the refrigerant, cooling before being released into the passenger compartment.

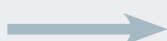
Garantisce il cambio di stato del refrigerante da liquido a gassoso (evaporazione). Durante il processo, l'aria soffiata fluisce attraverso la superficie dell'evaporatore e cede calore al refrigerante, raffreddandosi prima di essere immessa all'interno dell'abitacolo.

# Wash the A/C system? *When, Why and What*

## Lavare l'impianto A/C? *Quando, Perché e Cosa*

### WHEN / QUANDO ?

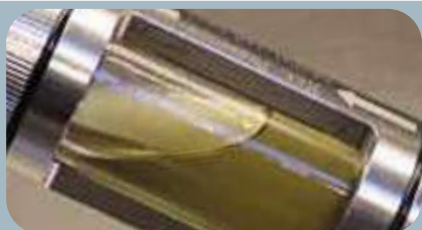
Replacement of the compressor  
Contamination of the system  
Sostituzione del compressore  
Contaminazione dell'impianto



### WHY / PERCHÈ ?

To avoid losing the manufacturer's warranty  
To avoid additional damages to the system  
Per non perdere la garanzia del costruttore  
Per evitare ulteriori danni all'impianto

### VISUAL DIAGNOSIS AND POSSIBLE CONTAMINANTS / DIAGNOSI VISIVA E POSSIBILI CONTAMINANTI



#### LIGHT BROWN COLOR

System / Compressor exposed to overheating

#### COLORE MARRONE CHIARO

Impianto / Compressore esposto a surriscaldamento



#### DARK BROWN / BLACK COLOR

System / Compressor exposed to excessive overheating

#### COLORE MARRONE SCURO / NERO

Impianto / Compressore esposto a surriscaldamento eccessivo



#### VISIBLE METAL CHIPS / PARTICLES

Compressor seizure caused by oil exhaustion or inadequate lubrication

#### TRUCIOLI / PARTICELLE DI METALLO VISIBILI

Grippaggio del compressore provocato da esaurimento dell'olio o da lubrificazione inadeguata



#### VISIBLE RUBBER / PLASTIC COMPOUNDS

Aged seals, aggressive additives reacting with seals and hoses, dryer filter failure or excessive dryer wear

#### COMPOSTI DI GOMMA / PLASTICA VISIBILI

Guarnizioni invecchiate, additivi aggressivi che reagiscono con guarnizioni e tubi flessibili, avaria del filtro essiccatore o eccessiva usura dell'essiccatore

### WHAT / COSA ?

**It is not possible to wash compressors, expansion/orifice valves, filter dryers or accumulators**, which must therefore be bypassed with adapters during the washing cycle. At the end of the washing cycle **it is necessary to replace the valves and filters.**

**Non è possibile effettuare il lavaggio di compressori, valvole di espansione/di espansione ad orifizio, filtri essiccatori o accumulatori**, che dovranno pertanto essere bypassati con adattatori durante il ciclo di lavaggio. Al termine del ciclo di lavaggio **è necessario sostituire le valvole e i filtri.**

# pressure reading using manometers lettura pressioni mediante manometri

**READING** and knowing how to **INTERPRET** the pressures is an important tool for carrying out a quick and effective diagnosis of the A/C system!

## PREVENTIVE TEST

To carry out this analysis it is necessary proceed with a preventive check of the operation of the system, measuring its static pressure, i.e. with the engine and A/C system turned off.

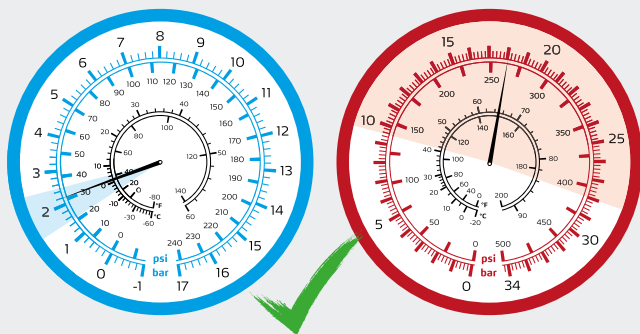
**NOTE: at 20°C the static pressure is approximately 5 bar.** If the result is lower than 5 bars means that the system's charge level is too low and therefore it is necessary to proceed directly to the leak search. *A system, even in good operative conditions, loses up to 50 grams of refrigerant per year.*

## PRESSURE READING

Once the operation of the system has been verified, we proceed by:

- **STARTING THE ENGINE**
  1. first at minimum
  2. then at a constant 1,500/2,000 rpm
- **TURNING ON THE AIR CONDITIONING**
  - at minimum temperature
  - at 70% ventilation

If the high and low pressure readings are within the pressures shown in the picture below, than the system is functioning properly.



However, if the values are out of the range, a further evaluation on a case-by-case basis is needed to identify the causes and possible actions to be taken.

**LEGGERE** e saper **INTERPRETARE** le pressioni è un importante strumento per effettuare una diagnosi rapida ed efficace dell'impianto A/C!

## TEST PREVENTIVO

Per eseguire questa analisi è necessario fare una verifica preventiva dell'operatività dell'impianto, misurandone la pressione statica, cioè a motore e impianto A/C spenti.

**NB: a 20°C la pressione statica è di circa 5 bar.** Se il dato misurato fosse più basso significherebbe un livello di carica dell'impianto troppo basso e quindi è necessario procedere direttamente alla ricerca perdite. *Un impianto, anche in buone condizioni, perde fino a 50 grammi di refrigerante l'anno.*

## LETTURA PRESSIONI

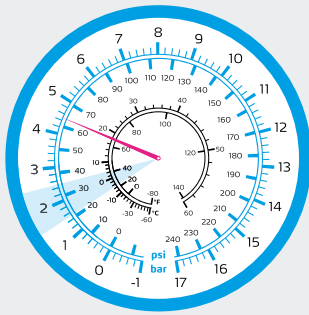
Verificata l'operatività del sistema, si procede:

- **all'AVVIAMENTO DEL MOTORE**
  1. prima al minimo
  2. poi a 1.500/2.000 giri/min costanti
- **all'ACCENSIONE DELL'ARIA CONDIZIONATA**
  - al minimo della temperatura
  - al 70% della ventilazione

Se la lettura delle pressioni di alta e bassa pressione rientra nella tabella sotto, il sistema funziona correttamente.

AMBIENT T T AMBIENTE (°C)	VARIABLE DISPLACEMENT COMPRESSOR COMPRESSORE A SPOSTAMENTO VARIABILE			
	LP /BP (bar)		HP /AP (bar)	
	min	max	min	max
15.5	1.5	2.3	9.5	13.0
21.0	1.5	2.3	12.5	17.5
26.5	1.5	2.3	14.0	20.5
32.0	1.5	2.5	16.0	24.0
38.8	1.5	2.5	18.5	25.5
43.0	1.5	2.5	22.0	28.0

Se i valori invece non rientrano nelle specifiche, è necessario valutare caso per caso per identificare le cause e le possibili azioni da intraprendere.



## CASE 1

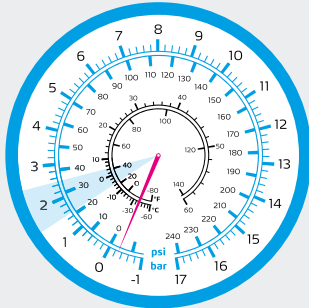
**LP:** too high  
**HP:** normal or too low

- Expansion valve stuck in open position**
  - perform valve diagnosis
  - check that the system is clean
- Compressor malfunction or damage**
  - replace (if damaged) and wash the system

## CASO 1

**BP:** troppo elevata  
**AP:** normale o troppo bassa

- Valvola di espansione bloccata in posizione aperta**
  - effettuare diagnosi della valvola
  - verificare che l'impianto sia pulito
- Malfunzionamento o danneggiamento del compressore**
  - sostituire (se danneggiato) ed effettuare il lavaggio dell'impianto



## CASE 2

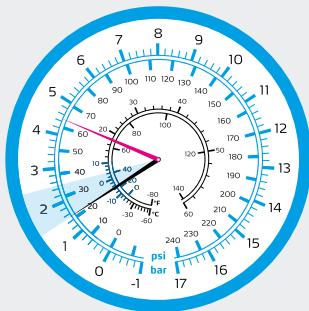
**LP:** too low  
**HP:** normal or too high

- Stuck compressor suction valve - not allowing adequate refrigerant flow**
  - perform valve diagnosis
  - check that the system is clean
- Clogged or saturated dryer filter**
  - the system charge could be in excess
  - humidity present due to inadequate vacuum

## CASO 2

**BP:** troppo bassa  
**AP:** normale o troppo alta

- Valvola di aspirazione del compressore bloccata: non consente il flusso di refrigerante adeguato**
  - effettuare diagnosi della valvola
  - verificare che l'impianto sia pulito
- Filtro essiccatore intasato o saturato**
  - la carica impianto potrebbe essere in eccesso
  - presente umidità per vuoto non adeguato



## CASE 3

**LP:** normal or too high  
**HP:** too high

- SYSTEM OVERLOAD**
- High pressure side clogged**
    - check that the system is clean
    - carry out external cleaning of the condenser to ensure optimal heat exchange
  - External temperature > 40°C**
    - the system charge could be in excess
    - wash the system

## CASO 3

**BP:** normale o troppo elevata  
**AP:** troppo elevata

- SOVRACCARICO IMPIANTO**
- Lato alta pressione intasato**
    - verificare che l'impianto sia pulito
    - eseguire pulizia esterna del condensatore per assicurare uno scambio termico ottimale
  - Temperatura esterna > 40°C**
    - la carica impianto potrebbe essere in eccesso
    - effettuare il lavaggio dell'impianto



## CASE 4

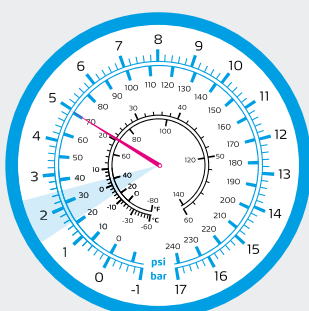
**LP:** normal or too low  
**HP:** too low

- Coolant level too low**
  - diagnose any leaks
- Expansion valve clogged or blocked**
  - perform valve diagnosis
  - check that the system is clean

## CASO 4

**BP:** troppo bassa  
**AP:** troppo bassa

- Livello refrigerante troppo basso**
  - diagnosticare eventuali perdite
- Valvola d'espansione intasata o bloccata**
  - effettuare diagnosi della valvola
  - verificare che l'impianto sia pulito



## CASE 5

**LP:** same value as HP  
**HP:** same value as LP

- Compressor failure**
  - determine cause and replace
  - wash the system
- Compressor drive belt/pulley malfunction**

## CASO 5

**BP:** stesso valore di AP  
**AP:** stesso valore di BP

- Avaria del compressore**
  - determinare causa e sostituire
  - effettuare il lavaggio dell'impianto
- Malfunzionamento della cinghia di trasmissione / puleggia del compressore**

# Lubricants for A/C compressors

## lubrificanti per compressori A/C

COMPRESSORS COMPRESSORI	OIL TYPE TIPO di OLIO	GAS TYPE TIPO di GAS	ISO VISCOSITY VISCOSITÀ ISO	FORMAT FORMATO	P/N	
<b>MECHANICALS</b> (and <b>SANDEN</b> <b>ELECTRICALS</b> ) <b>MECCANICI</b> (ed <b>ELETTRICI</b> <b>SANDEN</b> )	<b>PAG</b>	<b>R-134a</b>	<b>46</b>	250 ml	<b>11.029</b>	
				1 L	<b>11.032</b>	
				5 L	<b>11.050</b>	
			<b>46 + UV</b>	250 ml	<b>11.067</b>	
				1 L	<b>11.069</b>	
			<b>100</b>	250 ml	<b>11.030</b>	
				1 L	<b>11.033</b>	
				5 L	<b>11.051</b>	
			<b>100 + UV</b>	250 ml	<b>11.086</b>	
				1 L	<b>11.087</b>	
			<b>150</b>	250 ml	<b>11.031</b>	
				1 L	<b>11.034</b>	
		<b>150 + UV</b>	250 ml	<b>11.154</b>		
		<b>R-1234yf</b>	<b>46</b>	250 ml	<b>11.029YF</b>	
				1 L	<b>11.032YF</b>	
			<b>46 + UV</b>	250 ml	<b>11.067YF</b>	
				1 L	<b>11.069YF</b>	
			<b>100</b>	250 ml	<b>11.030YF</b>	
				1 L	<b>11.033YF</b>	
			<b>100 + UV</b>	250 ml	<b>11.086YF</b>	
				1 L	<b>11.087YF</b>	
			<b>R-134a</b> <b>R-1234yf</b> <b>R-456a</b>	<b>UNIVERSAL</b> <b>UNIVERSALE</b>	250 ml	<b>11.501</b>
					1 L	<b>11.502</b>
				<b>UNIVERSAL + UV</b> <b>UNIVERSALE + UV</b>	250 ml	<b>11.501UV</b>
	1 L			<b>11.502UV</b>		
<b>ELECTRICALS</b> (NO SANDEN) <b>ELETTRICI</b> (NO SANDEN)	<b>POE</b>	<b>R-134a</b>	<b>80</b>	250 ml	<b>11.084</b>	
		<b>R-1234yf</b>	<b>80</b>	250 ml	<b>11.084YF</b>	
		<b>R-134a/R-1234yf</b>	<b>UNIVERSAL</b> <b>UNIVERSALE</b>	250 ml	<b>11.508</b>	



# leak stop for A/C systems turafalle per impianti A/C

COMPRESSORS COMPRESSORI	OIL TYPE TIPO di OLIO	GAS TYPE TIPO di GAS	CAN BOMBOLETTA	P/N	SYRINGE SIRINGA	P/N
MECHANICALS (and SANDEN ELECTRICALS) MECCANICI (ed ELETTRICI SANDEN)	PAG	R-134a	30 ml	11.226	30 ml	11.014
					30 ml + adapt.	11.014K
			+ UV 40 ml	11.226B	40 ml	11.014B
					40 ml + adapt.	11.014BK
		R-1234yf	30 ml	11.226YF	30 ml	11.014YF
					30 ml + adapt.	11.014YFK
			+ UV 40 ml	11.226YFB	40 ml	11.014YFB
					40 ml + adapt.	11.014YFBK
		UNIVERSAL UNIVERSALE R-134a R-1234yf R-456a	6 ml			11.128
			6 ml + R-134a adapt.			11.128/1
			6 ml + R-1234yf adapt.			11.128/2
			6 ml + 2 adapt.			11.128/3
			8 ml			11.128B
			+ UV 8 ml + R-134a adapt.			11.128B/1
+ UV 8 ml + R-1234yf adapt.				11.128B/2		
+ UV 8 ml + 2 adapt.				11.128B/3		
ELECTRICALS (NO SANDEN) ELETTRICI (NO SANDEN)	POE	UNIVERSAL UNIVERSALE R-134a R-1234yf			30 ml	11.126H
					30 ml + 2 adapt.	11.126HK

# UV additives for A/C systems additivi UV per impianti A/C

COMPRESSORS COMPRESSORI	OIL TYPE TIPO di OLIO	GAS TYPE TIPO di GAS	CAN BOMBOLETTA	P/N	SYRINGE SIRINGA	P/N
MECHANICALS (and SANDEN ELECTRICALS) MECCANICI (ed ELETTRICI SANDEN)	PAG	R-134a	250 ml	11.005	12x 7.5 ml	11.801/1B
			350 ml	11.060		
			1 L	11.004	12x 7.5 ml + adapt.	11.801/1BK
		R-1234yf	250 ml	11.005YF	12x 7.5 ml	11.801/1YF
			350 ml	11.060YF	12x 7.5 ml + adapt.	11.801/1YFK
		UNIVERSAL UNIVERSALE R-134a / R-1234yf / R-456a	250 ml	11.003	12x 7.5 ml	11.824
			1 L	11.008	12x 7.5 ml + 2 adapt.	11.824K
		ELECTRICALS (NO SANDEN) ELETTRICI (NO SANDEN)	POE	UNIVERSAL UNIVERSALE R-134a R-1234yf	250 ml	11.005H
					12x 7.5 ml + 2 adapt.	11.826K

# index / indice

P/N	PAG	P/N	PAG	P/N	PAG	P/N	PAG
11.003	016	11.087	033	12.036/1	023	13.102B	061
11.004	016	11.087YF	034	12.036/3	023	13.102BYF	060
11.005	016	11.124	090	12.036CO2	037	13.102R	061
11.005H	017	11.124K	090	12.039	023	13.102RYF	060
11.005YF	016	11.124YFK	090	12.039/1	023	13.103B	061
11.008	016	11.126H	030	12.041	037	13.103BYF	060
11.014	030	11.126HK	030	12.604	089	13.103R	061
11.014B	030	11.128	031	12.612	089	13.103RYF	060
11.014BK	030	11.128/1	031	12.613	089	13.111B	061
11.014K	030	11.128/2	031	12.614	089	13.111BYF	060
11.014YF	030	11.128/3	031	12.621V	088	13.111R	061
11.014YFB	030	11.128B	031	13.010	062	13.111RYF	060
11.014YFBK	030	11.128B/1	031	13.010LC	063	13.112B	061
11.014YFK	030	11.128B/2	031	13.020YF	064	13.112R	061
11.020	043	11.128B/3	031	13.023HYF	064	13.124Y	053
11.020.500	043	11.129	091	13.023LYF	064	13.126B	061
11.020LI	043	11.129K	091	13.031	017	13.126R	061
11.020M	043	11.129YFK	091	13.031YF	017	13.134BT	061
11.020ME	043	11.192	020	13.032	086	13.134RT	061
11.020P	043	11.214	046	13.032K	087	13.143BNT	061
11.020S	042	11.214LI	046	13.032YFK	087	13.143RNT	061
11.020V	043	11.214M	046	13.033	086	13.149B	061
11.021	020	11.214ME	046	13.033K	087	13.149R	061
11.022	047	11.214P	046	13.033YFK	087	13.166B	061
11.022.500	047	11.214V	046	13.034	065	13.166R	061
11.023	043	11.226	029	13.035	065	13.170B	061
11.023/1	043	11.226B	029	13.036	065	13.170R	061
11.023/1S	042	11.226YF	029	13.037	065	13.189B	061
11.023/2S	042	11.226YFB	029	13.038	065	13.189R	061
11.024	045	11.227F	052	13.038D	065	13.194B	061
11.024/1	044	11.228T	022	13.038YF	064	13.194R	061
11.024/1LI	044	11.310	097	13.039	065	13.200	028
11.024/1M	044	11.316	097	13.039YF	064	13.200/2	028
11.024/1ME	044	11.320	097	13.041	017	13.201	053
11.024/1P	044	11.404	039	13.041YF	017	13.203.20B	027
11.024/1V	044	11.406	039	13.045	066	13.209	028
11.024LI	045	11.501	035	13.045YF	066	13.209/2	028
11.024M	045	11.501UV	035	13.046	066	13.210/1	024
11.024P	045	11.502	035	13.046YF	066	13.210/1D	024
11.024V	045	11.502UV	035	13.047H	065	13.210/1F	024
11.025	022	11.508	035	13.047L	065	13.210/1GB	024
11.025T	022	11.612	041	13.050	094	13.220	027
11.028	046	11.613	041	13.051	079	13.220/1	027
11.028V	046	11.627	040	13.052	094	13.220/2	027
11.029	033	11.629	040	13.053	079	13.220D	027
11.029YF	034	11.634	041	13.054	079	13.220F	027
11.030	033	11.635	041	13.058HYF	064	13.220GB	027
11.030YF	034	11.636	040	13.058LYF	064	13.224B	027
11.031	033	11.638	040	13.060	055	13.230	024
11.032	033	11.642	041	13.063	075	13.230D	024
11.032YF	034	11.713	052	13.064	075	13.230F	024
11.033	033	11.713K	052	13.065	075	13.230GB	024
11.033YF	034	11.714	052	13.066	075	13.242	025
11.034	033	11.728	045	13.067	075	13.259	036
11.035	052	11.729	045	13.068	075	13.260	038
11.035F	052	11.734	047	13.069	075	13.260D	038
11.036	052	11.800/60P	015	13.070	075	13.260F	038
11.036F	052	11.800/60YF	015	13.071	075	13.260UK	038
11.037	094	11.801/1H	015	13.072	075	13.262	066
11.038SP	094	11.824	015	13.074	054	13.263	066
11.050	033	11.824K	015	13.075	094	13.269YF	066
11.051	033	11.826K	015	13.079/1	048	13.270YF	066
11.059/5	033	12.003	018	13.080	065	13.302M	037
11.060	016	12.004	018	13.080G	065	13.302W	037
11.060YF	016	12.007	019	13.080YF	064	13.409	039
11.067	033	12.009	019	13.081	065	13.410	037
11.067YF	034	12.010	020	13.081G	065	13.411	039
11.069	033	12.011	020	13.081YF	064	13.413H	038
11.069/5	033	12.014	019	13.084	048	13.413L	038
11.069YF	034	12.021	092	13.084YFK	048	13.500B	054
11.070	052	12.022	092	13.086	073	13.506	048
11.070.600	052	12.026	092	13.089	020	13.510/1	055
11.084	035	12.028	092	13.095	065	13.510/2	055
11.084YF	035	12.031	088	13.095YF	064	13.511	055
11.086	033	12.033/3	023	13.097	020	13.522/1	026
11.086YF	034	12.036	023	13.099	053	13.522/1D	026

## index / indice

P/N	PAG	P/N	PAG	P/N	PAG	P/N	PAG
13.522/1F	026	88.013/10	073	88.125YF/5	068	88.806	059
13.522/1GB	026	88.014/10	072	88.126/5	068	88.809	059
13.526	051	88.015/10	072	88.128/5	068	88.810	059
13.527	054	88.016/10	072	88.135/5	070	88.811	059
13.529	050	88.017/10	073	88.139/10	072	88.900	084
13.530	055	88.018/10	073	88.142/5	070	88.901	084
13.532	051	88.018G/10	073	88.152/10	073	88.902	085
13.623	086	88.019/10	072	88.153/10	073	88.903	085
13.624	086	88.020/10	072	88.155/10	073	88.904	085
13.703	093	88.021/10	072	88.161/10	074	88.904/1	081
13.703L	093	88.022/10	078	88.162/10	072	Y13.102B	060
13.703M	093	88.023/10	078	88.180	080	Y13.102R	060
13.703P	093	88.024/10	072	88.183/5	071	Y13.143B	060
13.705	049	88.026/10	074	88.186	027	Y13.143R	060
13.717	048	88.027/10	074	88.186D	027	Y13.184B	060
13.752	093	88.028/10	074	88.186D/SX	027	Y13.184R	060
13.752/1	093	88.029/10	074	88.186F	027	Y13.198B	060
13.1033B	061	88.030/10	074	88.186GB	027	Y13.198R	060
13.1033R	061	88.031B/5	074	88.188	027	Y13.1010BYF	060
13.1040B	061	88.032B/5	074	88.190	080	Y13.1010RYF	060
13.1040R	061	88.033B/5	074	88.200	077	Y13.1013BYF	060
13.1054B	061	88.034B/5	074	88.205	081	Y13.1013RYF	060
13.1054R	061	88.035/10	075	88.210/5	070	Y13.1014B	060
13.1063B	061	88.036/10	075	88.211/5	070	Y13.1014R	060
13.1063R	061	88.037/10	075	88.212/5	070	Y13.1026BYF	060
13.1064B	061	88.038/10	075	88.214/5	070	Y13.1026RYF	060
13.1064R	061	88.039/10	078	88.216/5	070	Y13.1037B	060
13.1081B	061	88.040/10	078	88.217/5	070	Y13.1037R	060
13.1081R	061	88.041/10	078	88.218/5	070	Y13.1038B	060
13.1141B	061	88.042/5	068	88.227/5	070	Y13.1038R	060
13.1141R	061	88.043/5	068	88.230/5	069	Y13.1242B	060
13.1144B	061	88.047/10	073	88.231/5	069	Y13.1242R	060
13.1144R	061	88.050/10	077	88.232/5	069	Y13.1251B	060
13.1179B	061	88.051/10	077	88.233/5	069	Y13.1251R	060
13.1179R	061	88.052/10	077	88.234/5	069		
13.1238B	061	88.053/10	077	88.241/10	078		
13.1238R	061	88.054/10	077	88.257/10	074		
13.1239B	061	88.055/10	077	88.258/10	074		
13.1239R	061	88.056/10	077	88.259/10	074		
15.002W	056	88.057/10	077	88.270/10	078		
15.004W	056	88.058/10	077	88.271/10	078		
15.005	056	88.059/10	077	88.272/5	068		
15.006W	056	88.060/10	073	88.273/5	068		
15.007	057	88.068/10	073	88.276/10	078		
15.010	057	88.072/5	071	88.277	071		
15.011	057	88.072T/10	071	88.277H	071		
15.013W	057	88.075/10	072	88.278	071		
15.014W	057	88.077/10	073	88.278H	071		
15.048	058	88.080/10	076	88.289	071		
15.050	058	88.081/10	076	88.289H	071		
15.058	058	88.082/10	076	88.291/10	078		
15.059	058	88.083/10	076	88.292/10	078		
20.2003	035	88.084/10	076	88.293/10	078		
20.3003	035	88.085/10	076	88.296/10	078		
20.4003	035	88.086/10	076	88.298/10	078		
21.1003	034	88.087/10	076	88.299/10	078		
55.008	021	88.088/10	076	88.312	082		
55.043	021	88.089/10	076	88.313	082		
77.003	096	88.091/10	076	88.314	083		
77.004	096	88.093/5	069	88.315	083		
77.007	096	88.094/5	069	88.316	083		
77.008	096	88.095/5	069	88.322	081		
88.001/10	072	88.096/5	069	88.400	079		
88.002/10	072	88.097/5	069	88.401	079		
88.003/10	072	88.098/5	069	88.402	053		
88.004/10	072	88.099/5	069	88.405	079		
88.005/10	074	88.100/5	069	88.412	070		
88.006/10	074	88.101/5	069	88.650/5	070		
88.007/10	074	88.102/5	069	88.652/5	070		
88.008/5	069	88.110/10	072	88.700	080		
88.009/5	069	88.113/10	072	88.800	059		
88.010/5	068	88.118/10	073	88.801	059		
88.010YF/5	068	88.122/10	076	88.802	059		
88.011/5	068	88.123/5	068	88.803	059		
88.011YF/5	068	88.123YF/5	068	88.804	059		
88.012/10	078	88.125/5	068	88.805	059		



# UV ADDITIVES for the losses research ADDITIVI UV per la ricerca delle perdite

UV additives are special UV fluorescent contrast liquids specially designed for the **detection of refrigerant gas leaks** in air conditioning systems.

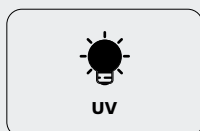
Gli additivi UV sono degli speciali liquidi di contrasto fluorescente UV appositamente progettati per la **ricerca delle perdite di gas refrigerante** negli impianti di aria condizionata.



P/N **11.801/1B**

PAG based

Net content **12x 7,5 ml**



UV



R-134a



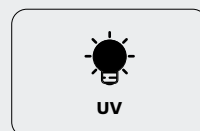
12x



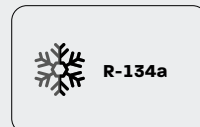
P/N **11.801/1BK**

PAG based

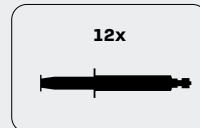
Net content **12x 7,5 ml**



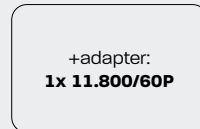
UV



R-134a



12x



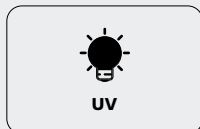
+adapter:  
**1x 11.800/60P**



P/N **11.801/1YF**

PAG based

Net content **12x 7,5 ml**



UV



R-1234yf



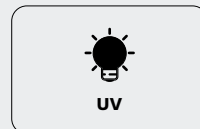
12x



P/N **11.801/1YFK**

PAG based

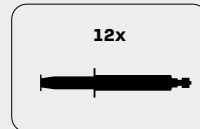
Net content **12x 7,5 ml**



UV



R-1234yf



12x



+adapter:  
**1x 11.800/60YF**



P/N **11.824**

PAG based

Net content **12x 7,5 ml**



UV



R-134a  
R-1234yf

12x



P/N **11.824K**

PAG based

Net content **12x 7,5 ml**

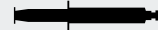


UV



R-134a  
R-1234yf

12x



+adapters:  
1x **11.800/60P**  
1x **11.800/60YF**



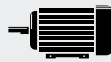
P/N **11.801/1H**

POE based

Net content **12x 7,5 ml**



UV



ELECTRIC



R-134a  
R-1234yf

12x



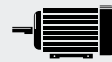
P/N **11.826K**

POE based

Net content **12x 7,5 ml**



UV

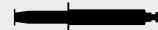


ELECTRIC



R-134a  
R-1234yf

12x



+adapters:  
1x **11.800/60P**  
1x **11.800/60YF**

## Syringe ADAPTERS

## ADATTATORI per siringa



A. R-134a

B. Chek valve / valvola di non-ritorno

P/N **11.800/60P**



R-134a



A. R-1234yf

B. Chek valve / valvola di non-ritorno

P/N **11.800/60YF**



R-1234yf

# A/C losses / perdite A/C

i A/C losses / perdite A/C      lubricants / lubrificanti      R-744 (CO2)      cleaning / pulizia



P/N **11.005**

PAG based

Net content **250 ml**

**x12 pcs** - 30x24x18cm



P/N **11.060**

PAG based

Net content **350 ml**

**x15 pcs** - 33x28x25cm

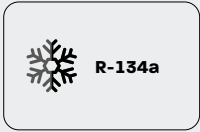
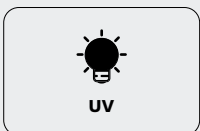


P/N **11.004**

PAG based

Net content **1 liter**

**x6 pcs** - 34x28x20cm



P/N **11.005YF**

PAG based

Net content **250 ml**

**x12 pcs** - 30x24x18cm

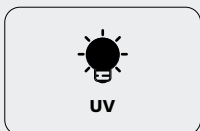


P/N **11.060YF**

PAG based

Net content **350 ml**

**x15 pcs** - 33x28x25cm



P/N **11.003**

PAG based

Net content **250 ml**

**x12 pcs** - 30x24x18cm

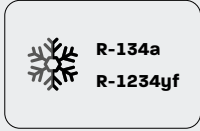
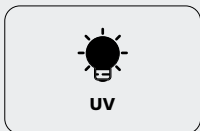


P/N **11.008**

PAG based

Net content **1 liter**

**x6 pcs** - 34x28x20cm







P/N **11.005H**

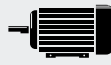
POE based

Net content **250 ml**

**x12 pcs** - 34x24x18cm



UV



ELECTRIC



R-134a

R-1234yf

## PISTON INJECTOR

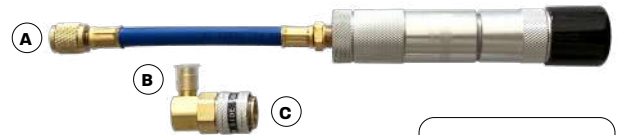
### INIETTORE a PISTONE

Capacity / capacità **2x 7,5 ml**

**A.** F1/4" SAE (7/16-20UNF-2B)

**B.** M1/4" SAE (7/16-20UNF-2A)

**C.** LP quick coupler for R-134a  
attacco rapido BP per R-134a



R-134a

P/N **13.031**

Capacity / capacità **2x 7,5 ml**

**A.** M12x1,5

**B.** F12x1,5

**C.** LP quick coupler for R-1234yf  
attacco rapido BP per R-1234yf



R-1234yf

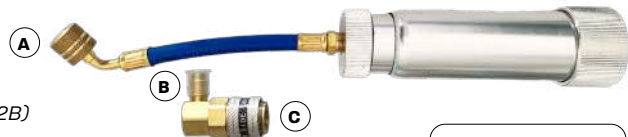
P/N **13.031YF**

Capacity / capacità **60 ml**

**A.** 45° F1/4" SAE (7/16-20UNF-2B)

**B.** M1/4" SAE (7/16-20UNF-2A)

**C.** LP quick coupler for R-134a  
attacco rapido BP per R-134a



R-134a

P/N **13.041**

Capacity / capacità **60 ml**

**A.** 45° M12x1,5

**B.** F12x1,5

**C.** LP quick coupler for R-1234yf  
attacco rapido BP per R-1234yf




R-1234yf

P/N **13.041YF**




P/N 12.003

**UV LAMP**  
**LAMPADA UV**


  
**UV**

---

**60W**

  
**12 V**


**P/N 12.011**  
  
**INCLUDED**

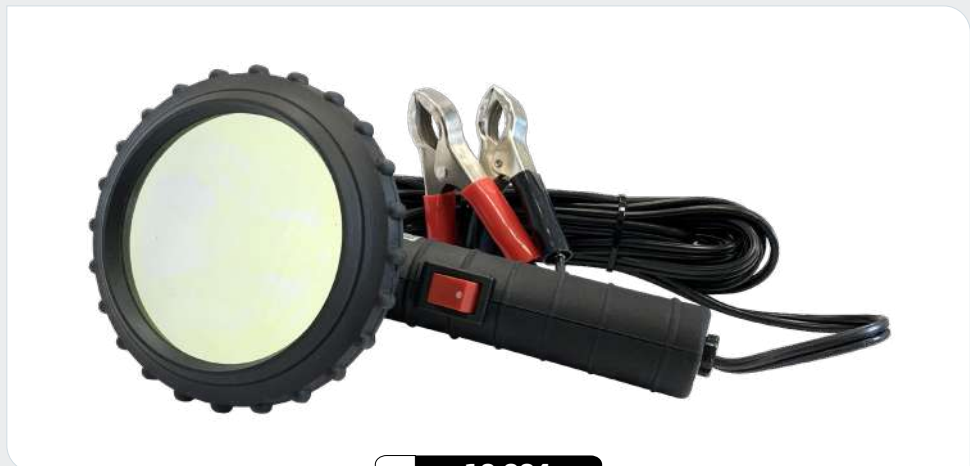
  
**UV**

---

**100W**

  
**12 V**

**P/N 12.011**  
  
**INCLUDED**



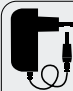



P/N 12.004

**UV LAMP**  
**LAMPADA UV**






P/N **12.007**  
**UV LAMP**  
**LAMPADA UV**

 UV	1x 
HI-LED	
	110/220V INCLUDED
154 - 170 $\mu$ W/cm <sup>2</sup>	
50W	
P/N 12.011  INCLUDED	








P/N **12.009**  
**UV LAMP**  
**LAMPADA UV**

 UV	3x 
12 LED	
P/N 12.011  INCLUDED	

**NEW!**



P/N **12.014**  
**UV LAMP**  
**LAMPADA UV**

 UV	1x 
5W COB	
 TOP	 FRONT
5W COB	3W XPE
P/N 12.011  INCLUDED	



**UV additive REMOVER**  
**PULITORE Additivo UV**



P/N **11.192**

**READY TO USE**

Net content **750 ml**

**x12 pcs** - 34x25x28cm



P/N **11.021**

Net content **400 ml**

**x12 pcs** - 27x22x21cm



P/N **12.010**

**SAFETY GOGGLES**  
**OCCHIALI PROTETTIVI**



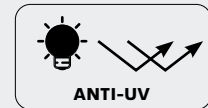
**ANSI Z87.1**

**CE EN 166B**



P/N **12.011**

**ANTI-UV GOGGLES**  
**OCCHIALI ANTI-UV**



P/N **13.089**

**PROTECTIVE GLOVES**  
**GUANTI PROTETTIVI**

**EN 420:2003**  
(dexterity 5)

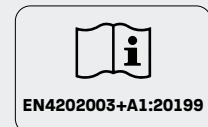
**EN 388:2003**  
(mechanical risk)

**EN 374-1:2003**  
**EN 374-3:2003**  
(chemicals and micro-organism)



P/N **13.097**

**PROTECTIVE GLOVES**  
**GUANTI PROTETTIVI**







**x1 pc** - 31x13x38cm

**P/N 55.008**

### UV LEAK DETECTION KIT with case KIT CERCAFUGHE UV con valigetta

- P/N 12.003** 60W UV lamp with 90° swinging head / Lampada UV 60W con testa rotante 90°
- P/N 12.011** Anti-UV goggles / Occhiali anti-UV
- P/N 11.005** 250 ml UV additive (PAG based) / Additivo UV (base PAG) 250 ml
- P/N 11.021** UV additive remover spray / Spray pulitore additivo UV



UV



R-134a



**x1 pc** - 31x13x38cm

**P/N 55.043**

### UV LEAK DETECTION KIT with case KIT CERCAFUGHE UV con valigetta

- P/N 12.009** Pocket UV lamp with battery / Lampada UV tascabile con batteria
- P/N 11.824K** 12x 7,5 ml UV additive (PAG based) and adapters / Additivo UV (base PAG) 12x 7,5 ml e adattatori
- P/N 12.011** Anti-UV goggles / Occhiali anti-UV
- P/N 11.021** UV additive remover spray / Spray pulitore additivo UV

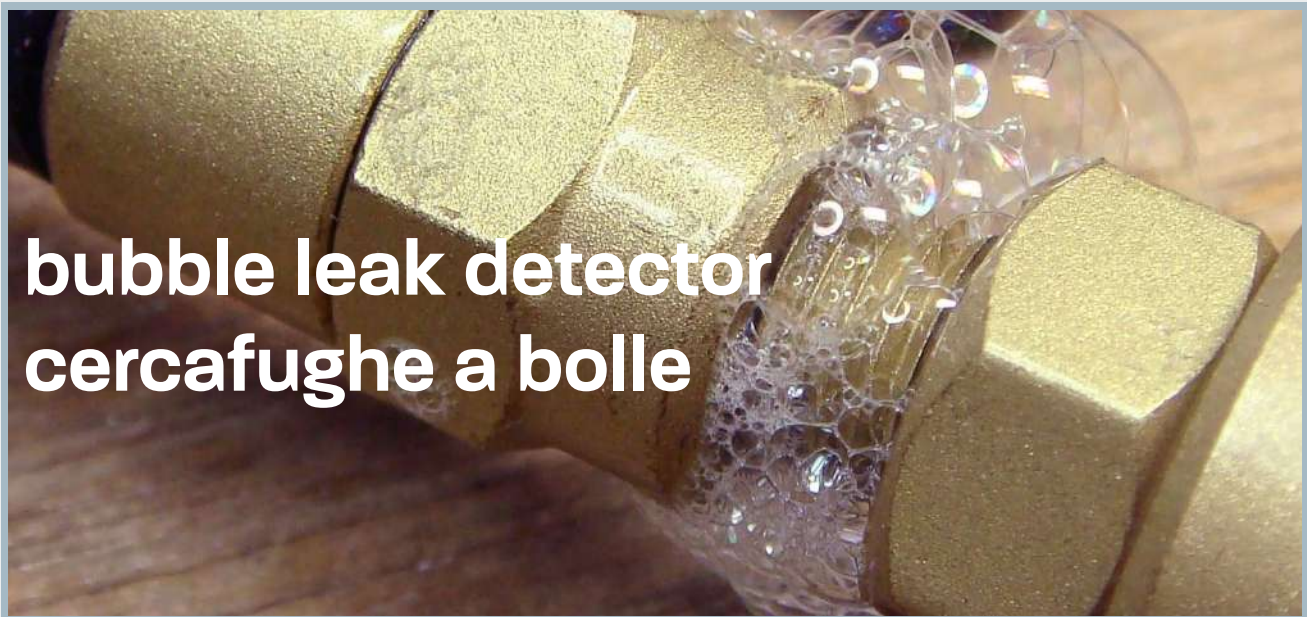


UV



R-134a

R-1234yf



# bubble leak detector cercafughe a bolle

## POLAR -40

New formulation with **freezing point** below **-40°C!**

Nuova formulazione con **punto di congelamento** inferiore ai **-40°C!**



P/N **11.228T**

**READY TO USE**

Net content **750 ml**

**x12 pcs** - 34x25x28cm



P/N **11.025**

**SPRAY**

Net content **400 ml**

**x12 pcs** - 27x22x21cm



P/N **11.025T**

**READY TO USE**

Net content **750 ml**

**x12 pcs** - 34x25x28cm





# electronic leak detector cercafughe elettronici

The electronic leak detectors allow, quickly and effectively, to identify the micro-leaks present in the A/C system where a particular refrigerant gas or hydrogen has been inserted.

I cercafughe elettronici permettono, in maniera rapida ed efficace, di individuare le micro-fughe presenti nell'impianto A/C dove è stato inserito un particolare gas refrigerante o Idrogeno.



P/N **12.039**

**UNIVERSALE** leak detector  
Cercafughe **UNIVERSALE**



R-134a  
R-1234yf  
R-456a  
etc...



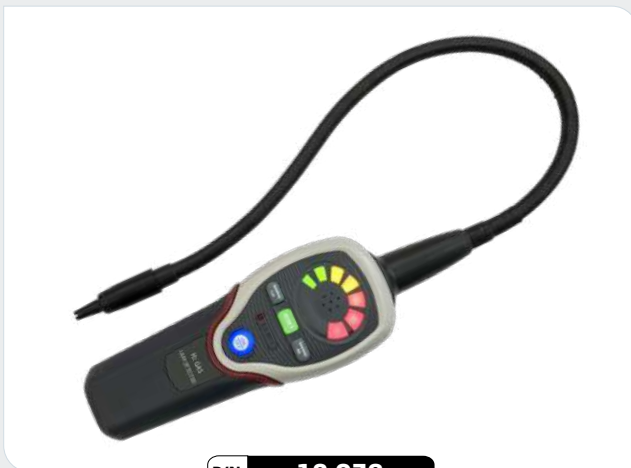
P/N **12.033/3**

**Tester**  
for / per 12.039



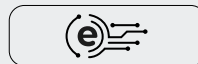
P/N **12.039/1**

**Sensor / Sensore**  
for / per 12.039



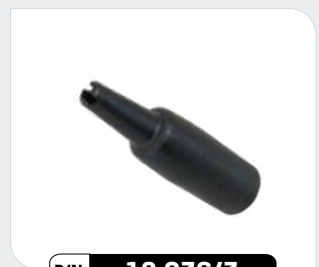
P/N **12.036**

**HYDROGEN** leak detector  
Cercafughe **IDROGENO**



P/N **12.036/1**

**Sensor / Sensore**  
for / per 12.036



P/N **12.036/3**

**Protection / Protezione**  
for / per 12.036, 12.039



The most effective and efficient solution for detecting possible leaks in automotive AC systems. Thanks to the use of the Nitrogen / Hydrogen mixture and the appropriate electronic leak detector, it is possible to find the micro-leaks of gas present in the system with ease and precision. La soluzione più efficace ed efficiente per la detenzione di possibili fughe negli impianti AC automotive. Grazie all'impiego della miscela Azoto/Idrogeno e dell'apposito cercafughe elettronico è possibile trovare con facilità e precisione le micro-fughe di gas presenti nell'impianto.



x1 pc - 53x14x42cm

- P/N **13.230** \*
  - P/N **13.230D** \*
  - P/N **13.230F** \*
  - P/N **13.230GB** \*
- with 2.2-liter cylinder / con bombola 2.2 litri

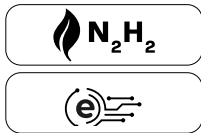
- P/N **13.210/1** \*
  - P/N **13.210/1D** \*
  - P/N **13.210/1F** \*
  - P/N **13.210/1GB** \*
- with 1-liter cylinder / con bombola 1 litro

### NITROGEN/HYDROGEN LEAK DETECTION KIT KIT CERCAFUGHE AZOTO/IDROGENO

- P/N **13.209/2** 2.2-liter 95%-Nitrogen 5%-Hydrogen cylinder / Bombola 95%-Azoto 5%-Idrogeno 2.2 litri
- P/N **88.186** 1 liter cylinder reduction / Riduttore bombola 1 litro
- P/N **88.217** Adapter / Adattatore M1/4" SAE (7/16-20UNF-2A) x M12x1,5
- P/N **13.124Y** 1,5 mt yellow hose / Tubo giallo 1,5 mt - 2x F1/4" SAE (7/16-20UNF-2B)
- P/N **13.220** \* Pressure regulator for 5-liter cylinder and more / Regolatore di pressione per bombole 5 litri e più
- P/N **12.036** Electronic leak detector for Hydrogen / Cercafughe elettronico per Idrogeno
- P/N **13.512/1** Manifold gauge with hose / Manometro con tubo  
Gas: R-134a, R-1234yf, R-404A, R-407C, R-422D, R-507, R-22, R-32, R-410A
- P/N **13.034** HP quick coupler for R-134a x M1/4"SAE / Attacco rapido AP per R-134a x M1/4" SAE
- P/N **13.080YF** HP quick coupler for R-1234yf x M12x1,5 / Attacco rapido AP per R-1234yf x M12x1,5

The P/N changes depending on where the kit is used / Il P/N cambia in base a dove viene utilizzato il kit:  
**13.230 / 13.220** in Italy and Slovenia / in Italia e Slovenia.  
**13.230D / 13.220D** in Germany, Poland, Holland and Romania / in Germania, Polonia, Olanda e Romania.  
**13.230F / 13.220F** in France, Belgium, Portugal, Spain, Greece and Israel / in Francia, Belgio, Portogallo, Spagna, Grecia e Israele.  
**13.230GB / 13.220GB** in the United Kingdom, Denmark and Ireland / in Regno Unito, Danimarca e Irlanda.

NOTE: \*



**x1 pc** - 53x14x42cm

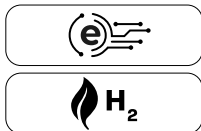
**P/N 13.242**

### BASIC PLUS

#### N2H2 LEAK DETECTION KIT / KIT CERCAFUGHE N2H2

<b>P/N 13.209</b>	1-liter 95%-Nitrogen 5%-Hydrogen cylinder / Bombola 95%-Azoto 5%-Idrogeno 1 litro
<b>P/N 88.217</b>	Adapter / Adattatore M1/4" SAE (7/16-20UNF-2A) x M12x1,5
<b>P/N 13.124Y</b>	1,5 mt yellow hose / Tubo giallo 1,5 mt - 2x F1/4" SAE (7/16-20UNF-2B)
<b>P/N 13.203.20B</b>	20 bar pressure regulator for 1-liter cylinder / Regolatore di pressione 20 bar per bombole 1 litro
<b>P/N 12.036</b>	Electronic leak detector for Hydrogen / Cercafughe elettronico per Idrogeno
<b>P/N 13.512/1</b>	Manifold gauge with hose / Manometro con tubo Gas: R-134a, R-1234yf, R-404A, R-407C, R-422D, R-507, R-22, R-32, R-410A
<b>P/N 13.034</b>	HP quick coupler for R-134a x M1/4"SAE / Attacco rapido AP per R-134a x M1/4" SAE
<b>P/N 13.080YF</b>	HP quick coupler for R-1234yf x M12x1,5 / Attacco rapido AP per R-1234yf x M12x1,5

#### Spare parts / Parti di ricambio



**P/N 12.036**

**Hydrogen leak detector**  
Cercafughe per **Idrogeno**



**P/N 13.209**

**Non-Refillable / Non-Ricaricabile**

Net content **1 liter**  
**x6 pcs** - 16x23x34cm



**P/N 13.209/2**

Net content **2 liters**  
**x4 pcs** - 24x24x29cm





**x1 pc** - 53x13x42cm

P/N **13.522/1** \*

P/N **13.522/1D** \*

P/N **13.522/1F** \*

P/N **13.522/1GB** \*

## NITROGEN PRESSURIZATION KIT KIT PRESSURIZZAZIONE AZOTO

- P/N **13.200** 1-liter 100%-Nitrogen cylinder / Bombola 100%-Azoto 1 litro
- P/N **88.186** 1 liter cylinder reduction / Riduttore bombola 1 litro
- P/N **88.217** Adapter / Adattatore M1/4" SAE (7/16-20UNF-2A) x M12x1,5
- P/N **13.124Y** 1,5 mt yellow hose / Tubo giallo 1,5 mt - 2x F1/4" SAE (7/16-20UNF-2B)
- P/N **13.220** \* Pressure regulator for 5-liter cylinder and more / Regolatore di pressione per bombole 5 litri e più
- P/N **13.512/1** Manifold gauge with hose / Manometro con tubo  
Gas: R-134a, R-1234yf, R-404A, R-407C, R-422D, R-507, R-22, R-32, R-410A
- P/N **13.034** HP quick coupler for R-134a x M1/4"SAE / Attacco rapido AP per R-134a x M1/4" SAE
- P/N **13.080YF** HP quick coupler for R-1234yf x M12x1,5 / Attacco rapido AP per R-1234yf x M12x1,5

### \* NOTE:

The P/N changes depending on where the kit is used / Il P/N cambia in base a dove viene utilizzato il kit:

**13.230 / 13.220** in Italy and Slovenia / in Italia e Slovenia.

**13.230D / 13.220D** in Germany, Poland, Holland and Romania / in Germania, Polonia, Olanda e Romania.

**13.230F / 13.220F** in France, Belgium, Portugal, Spain, Greece and Israel / in Francia, Belgio, Portogallo, Spagna, Grecia e Israele.

**13.230GB / 13.220GB** in the United Kingdom, Denmark and Ireland / in Regno Unito, Danimarca e Irlanda.

## Spare parts / Parti di ricambio



P/N **13.200**

Non-Refillable / Non-Ricaricabile

Net content **1 liter**

**x6 pcs** - 16x23x34cm



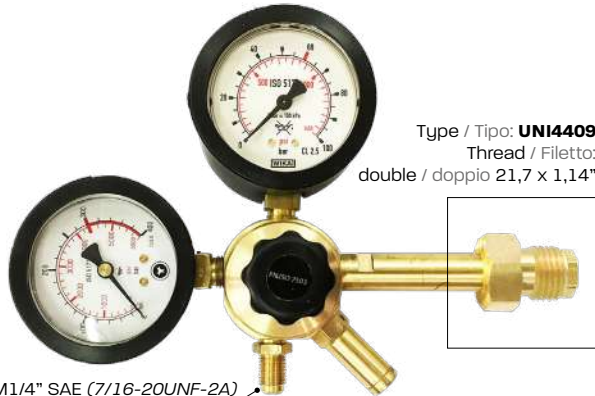
P/N **13.200/2**

Net content **2 liters**

**x4 pcs** - 24x24x29cm



italian version / versione italiana



Type / Tipo: **UNI4409**  
Thread / Filetto: double / doppio 21,7 x 1,14"

M1/4" SAE (7/16-20UNF-2A)

P/N **13.220**

**PRESSURE REGULATOR / REGOLATORE di PRESSIONE**

for 5 liter cylinder and more / per bombole da 5 litri e più

Standard / Normativa: **EN ISO 2503**

german version / versione tedesca



Type / Tipo: **DIN477-10**  
Thread / Filetto: 24,32 x 1,14"

P/N **13.220D**

french version / versione francese



Type / Tipo: **NF E29-650/C**  
Thread / Filetto: 21,7 x 1,814

P/N **13.220F**

english version / versione inglese



Type / Tipo: **BS341-3**  
Thread / Filetto: 5/8 x 1"

P/N **13.220GB**

Spare parts / Parti di ricambio



P/N **13.220/1**

**PRESSURE GAUGE / MANOMETRO**

ø 63 mm - ISO 5171 - cl. 2.5

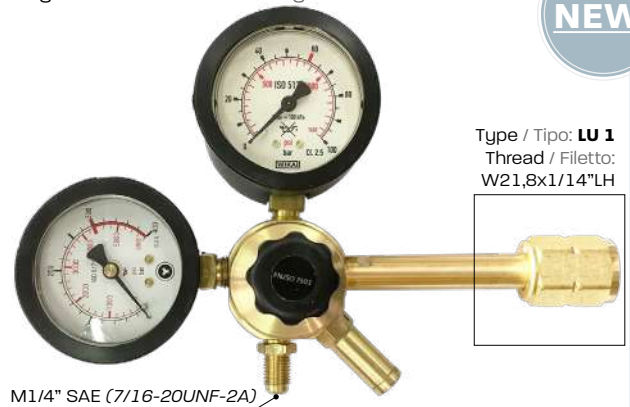
0 ~ 400 bar



P/N **13.220/2**

0 ~ 100 bar

belgian version / versione belga



**NEW!**

Type / Tipo: **LU 1**  
Thread / Filetto: W21,8x1/4"LH

M1/4" SAE (7/16-20UNF-2A)

P/N **13.224B**

**PRESSURE REGULATOR / REGOLATORE di PRESSIONE**

for 5 liter cylinder and more / per bombole da 5 litri e più

Standard / Normativa: **EN ISO 2503**



P/N **13.203.20B**

**PRESSURE REGULATOR / REGOLATORE di PRESSIONE**

for 1 liter cylinder

0 ~ 20 bar



13.220 -> 1 liter cylinder

P/N **88.186**



13.220D -> 1 liter cylinder

P/N **88.186D**



13.220D -> 10 liter cylinder

P/N **88.188**



13.220F -> 1 liter cylinder

P/N **88.186F**



13.220GB -> 1 liter cylinder

P/N **88.186GB**



Pressure regulator for 10 liter cylinder -> 1 liter cylinder

P/N **88.186D/SX**

# compressed gas cylinders bombole di gas compresso



## 100%-Nitrogen cylinders Bombole 100%-Azoto



P/N **13.200**



P/N **13.200/2**

Non-Refillable / Non-Ricaricabile

Net content **1 liter**

Net content **2 liters**

**x6 pcs** - 16x23x34cm

**x4 pcs** - 24x24x29cm



## 95%-Nitrogen 5%-Hydrogen cylinders Bombole 95%-Azoto 5%-Idrogeno



P/N **13.209**



P/N **13.209/2**

Non-Refillable / Non-Ricaricabile

Net content **1 liter**

Net content **2 liters**

**x6 pcs** - 16x23x34cm

**x4 pcs** - 24x24x29cm



# sealants turafalle

Product specially formulated for rapid repair of micro-leaks in automotive A/C systems. The product does not react to oxygen and humidity. It also can be used for preventive actions.  
Prodotto appositamente formulato per una rapida riparazione delle micro-perdite negli impianti A/C automotive. Il prodotto non reagisce all'ossigeno e all'umidità. Può anche essere usato per azioni preventive.



PAG based

**x12 pcs** - 30x24x18cm

**LEAK STOP**  
in can

**TURAFALLE**  
in bomboletta



PAG based

**x12 pcs** - 30x24x18cm

**P/N 11.226**



**R-134a**

Net content  
**30 ml**

**P/N 11.226B**



**R-134a**



**UV**

Net content  
**40 ml**

**P/N 11.226YF**



**R-1234yf**

Net content  
**30 ml**

**P/N 11.226YFB**



**R-1234yf**



**UV**

Net content  
**40 ml**



**LEAK STOP / TURAFALLE**

**x10 pcs - 27x22x21cm**



**LEAK STOP / TURAFALLE**

**x10 pcs - 27x22x21cm**



**LEAK STOP / TURAFALLE**

**x10 pcs - 27x22x21cm**

**LEAK STOP**  
in syringe

**TURAFALLE**  
in siringa

**P/N 11.014**



**R-134a**

Net content  
**30 ml**

**P/N 11.014B**



**R-134a**

Net content  
**40 ml**



**UV**

**P/N 11.014K**



**R-134a**

Net content  
**30 ml**

+adapters:  
**1x 11.800/60P**

**P/N 11.014BK**



**R-134a**

Net content  
**40 ml**

+adapters:  
**1x 11.800/60P**



**UV**

**P/N 11.014YF**



**R-1234yf**

Net content  
**30 ml**

**P/N 11.014YFB**



**R-1234yf**

Net content  
**40 ml**



**UV**

**P/N 11.014YFK**



**R-1234yf**

Net content  
**30 ml**

+adapters:  
**1x 11.800/60YF**

**P/N 11.014YFBK**



**R-1234yf**

Net content  
**40 ml**

+adapters:  
**1x 11.800/60YF**



**UV**

**P/N 11.126H**



**R-134a**  
**R-1234yf**

Net content  
**30 ml**



**ELECTRIC**

**P/N 11.126HK**



**R-134a**  
**R-1234yf**

Net content  
**30 ml**

+adapters:  
**1x 11.800/60P**  
**1x 11.800/60YF**



**ELECTRIC**

**Concentrated  
LEAK STOP**  
in syringe

**TURAFALLE  
concentrato**  
in siringa



**LEAK STOP / TURAFALLE**  
x10 pcs - 27x22x21cm



**LEAK STOP / TURAFALLE**  
x10 pcs - 27x22x21cm

**P/N 11.128**



Net content  
**6 ml**  
CONCENTRATED

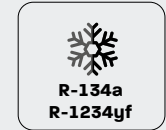
**P/N 11.128/2**



Net content  
**6 ml**  
CONCENTRATED

+adapters:  
**1x 11.800/60YF**

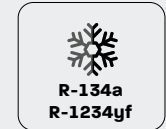
**P/N 11.128/1**



Net content  
**6 ml**  
CONCENTRATED

+adapters:  
**1x 11.800/60P**

**P/N 11.128/3**



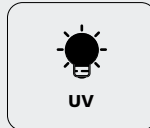
Net content  
**6 ml**  
CONCENTRATED

+adapters:  
**1x 11.800/60P  
1x 11.800/60YF**

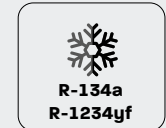
**P/N 11.128B**



Net content  
**8 ml**  
CONCENTRATED



**P/N 11.128B/1**



Net content  
**8 ml**  
CONCENTRATED

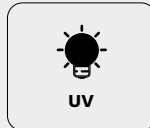


+adapters:  
**1x 11.800/60P**

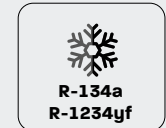
**P/N 11.128B/2**



Net content  
**8 ml**  
CONCENTRATED



**P/N 11.128B/3**



Net content  
**8 ml**  
CONCENTRATED



+adapters:  
**1x 11.800/60P  
1x 11.800/60YF**

Syringe  
**ADAPTERS**

**ADATTATORI**  
per siringa



**A.** R-134a  
**B.** Chek valve / valvola di non-ritorno

**P/N 11.800/60P**



**A.** R-1234yf  
**B.** Chek valve / valvola di non-ritorno

**P/N 11.800/60YF**



# lubricants for compressors

# lubrificanti per compressori

Selection of lubricant oils for mechanical and electrical compressors.  
Selezione di oli lubrificanti per compressori meccanici ed elettrici.

**x12 pcs** - 21x16x19cm



**P/N 11.029**  
250 ml

**P/N 11.067**  
250 ml + UV

**x12 pcs** - 33x28x25cm



**P/N 11.032**  
1 liter

**P/N 11.069**  
1 liter + UV

**x2 pcs** - 32x28x21cm



**P/N 11.050**  
5 liter

**P/N 11.069/5**  
5 liter + UV

**PAG ISO 46**  
for / per  
**R-134a**

**x12 pcs** - 21x16x19cm



**P/N 11.030**  
250 ml

**P/N 11.086**  
250 ml + UV

**x12 pcs** - 33x28x25cm



**P/N 11.033**  
1 liter

**P/N 11.087**  
1 liter + UV

**x2 pcs** - 32x28x21cm



**P/N 11.051**  
5 liter

**P/N 11.059/5**  
5 liter + UV

**PAG ISO 100**  
for / per  
**R-134a**

**x12 pcs** - 21x16x19cm



**P/N 11.031**  
250 ml

**x12 pcs** - 33x28x25cm



**P/N 11.034**  
1 liter

**PAG ISO 150**  
for / per  
**R-134a**



**x12 pcs - 21x16x19cm**



**P/N 11.029YF**  
250 ml

**P/N 11.067YF**  
250 ml + UV

**x12 pcs - 33x28x25cm**



**P/N 11.032YF**  
1 liter

**P/N 11.069YF**  
1 liter + UV

**PAG ISO 46**  
for / per  
**R-1234yf**

**x12 pcs - 21x16x19cm**



**P/N 11.030YF**  
250 ml

**P/N 11.086YF**  
250 ml + UV

**x12 pcs - 33x28x25cm**



**P/N 11.033YF**  
1 liter

**P/N 11.087YF**  
1 liter + UV

**PAG ISO 100**  
for / per  
**R-1234yf**

**x12 pcs - 33x28x25cm**



**P/N 21.1003**  
1 liter

**PAO ISO 68**

**x12 pcs - 21x16x19cm**



**P/N 11.501**  
250 ml

**P/N 11.501UV**  
250 ml + UV

**x12 pcs - 33x28x25cm**



**P/N 11.502**  
1 liter

**P/N 11.502UV**  
1 liter + UV

**PAG**  
for / per  
**R-134a/R-1234yf**  
**+ SANDEN**

**x12 pcs - 21x16x19cm**



**P/N 11.084**  
250 ml

**R-134a**

**x12 pcs - 21x16x19cm**



**P/N 11.084YF**  
250 ml

**R-1234yf**

**x12 pcs - 21x16x19cm**



**P/N 11.508**  
250 ml

**R-134a**  
**R-1234yf**

**POE ISO 80**  
for / per  
**ELECTRIC**  
**COMPRESSORS**  
**NO SANDEN**



**P/N 20.3003**  
**V. ISO 32**

Net content **1 liter**

**x12 pcs - 33x28x25cm**



**P/N 20.2003**  
**V. ISO 46**

Net content **1 liter**

**x12 pcs - 33x28x25cm**



**P/N 20.4003**  
**V. ISO 68**

Net content **1 liter**

**x12 pcs - 33x28x25cm**


**lubricants**  
for  
**VACUUM**  
**PUMPS**

**lubrificanti**  
per  
**POMPE** da  
**VUOTO**

# R-744 system maintenance manutenzione impianti R-744



P/N **13.259**

 **x1 pc** - 31x13x38cm

## CO2 SERVICE KIT

- 3x** P/N **13.414** 4-way manifold for R-744 (CO2) / Gruppo manometrico 4 vie per R-744 (CO2)
- P/N **13.409** 1,5 mt black hose - F1/4" SAE (7/16-20UNF-2B) x F1/4" SAE (7/16-20UNF-2B) for R-744 (CO2)  
Tubo nero 1,5 mt - F1/4" SAE (7/16-20UNF-2B) x F1/4" SAE (7/16-20UNF-2B) per R-744 (CO2)
- P/N **13.413H** HP quick coupler for R-744 (CO2) x M1/4" SAE (7/16-20UNF-2A) with tap  
Attacco rapido AP per R-744 x M1/4" SAE (7/16-20UNF-2A) con rubinetto
- P/N **13.413L** LP quick coupler for R-744 (CO2) x M1/4" SAE (7/16-20UNF-2A) with tap  
Attacco rapido BP per R-744 x M1/4" SAE (7/16-20UNF-2A) con rubinetto

The **CO2 SERVICE KIT** was developed with the aim of providing automotive professionals with a simple and economical procedure for the maintenance and refilling of CO2 air conditioning systems and heat pumps.

Il **CO2 SERVICE KIT** è stato sviluppato con l'obiettivo di fornire ai professionisti del settore automobilistico una procedura semplice ed economica per la manutenzione e la ricarica degli impianti di climatizzazione a CO2 e delle pompe di calore.



R-744  
(CO2)

## 100%-R-744 (CO2) cylinders Bombole 100%-R-744 (CO2)



P/N **13.302W**

Net content **420 g.**

**Non-Refillable / Non-Ricaricabile**

for / per **VOLKSWAGEN**



P/N **13.302M**

Net content **340 g.**

for / per **MERCEDES BENZ**



P/N **12.036CO2**

## R-744 (CO2) leak detector Cercafughe per R-744 (CO2)



R-744  
(CO2)



P/N **12.041**

## Protection / Protezione for / per 12.036CO2

Standard / Normativa:  
**EN ISO 5171**

ø 63 mm - 0 ~ 400 bar

Standard  
Normativa:  
**EN ISO 2503**

M1/4" SAE (7/16-20UNF-2A)



P/N **13.410**

## R-744 (CO2) PRESSURE REGULATOR / REG. di PRESSIONE

for 5 liter cylinder and more / per bombole da 5 litri e più

outlet pressure / pressione in uscita 200 bar





x1 pc - 53x13x42cm

P/N **13.260** \*

P/N **13.260D** \*

P/N **13.260F** \*

P/N **13.260UK** \*

**UNIVERSAL N2H2 LEAK DETECTION KIT**  
**KIT CERCAFUGHE N2H2 UNIVERSALE**

- P/N **13.209/2** 2.2-liter 95%-Nitrogen, 5%-Hydrogen cylinder / Bombola 95%-Azoto, 5%-Idrogeno 2.2 litri
- P/N **88.186** 1 liter cylinder reduction / Riduttore bombola 1 litro
- P/N **88.217** Adapter / Adattatore M1/4" SAE (7/16-20UNF-2A) x M12x1,5
- P/N **13.124Y** 1,5 mt yellow hose / Tubo giallo 1,5 mt - 2x F1/4" SAE (7/16-20UNF-2B)
- P/N **13.220** \* Pressure regulator for 5-liter cylinder and more / Regolatore di pressione per bombole 5 litri e più
- P/N **13.512/1** Manifold gauge with hose / Manometro con tubo  
Gas: R-134a, R-1234yf, R-404A, R-407C, R-422D, R-507, R-22, R-32, R-410A
- P/N **12.036** Electronic leak detector for Hydrogen / Cercafughe elettronico per Idrogeno
- P/N **13.413H** HP quick coupler for R-744 x M1/4"SAE / Attacco rapido AP per R-744 x M1/4" SAE
- P/N **13.034** HP quick coupler for R-134a x M1/4"SAE / Attacco rapido AP per R-134a x M1/4" SAE
- P/N **13.080YF** HP quick coupler for R-1234yf x M12x1,5 / Attacco rapido AP per R-1234yf x M12x1,5

\* **NOTE:**

The P/N changes depending on where the kit is used / Il P/N cambia in base a dove viene utilizzato il kit:  
**13.211 / 13.220** in Italy and Slovenia / in Italia e Slovenia.  
**13.211D / 13.220D** in Germany, Poland, Holland and Romania / in Germania, Polonia, Olanda e Romania.  
**13.211F / 13.220F** in France, Belgium, Portugal, Spain, Greece and Israel / in Francia, Belgio, Portogallo, Spagna, Grecia e Israele.  
**13.211GB / 13.220GB** in the United Kingdom, Denmark and Ireland / in Regno Unito, Danimarca e Irlanda.



P/N **13.413H**

HP / AP

x M1/4" SAE with tap



P/N **13.413L**

LP / BP

x M1/4" SAE with tap

**R-744 (CO2) quick couplers**  
**Attacchi rapidi R-744 (co2)**





P/N **13.411**



**R-744 (CO2)**

analog, oil filled  
analogico, glicerina

ø 80 mm

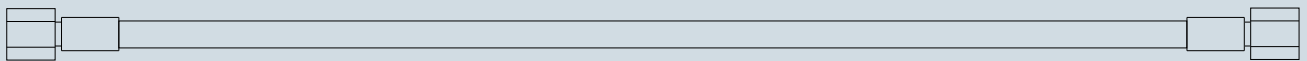
3x M1/4" SAE  
(7/16-20UNF-2A)

**2-way manifold**  
**Gruppo manometrico a 2 vie**

## hoses tubazioni



**R-744:** 1885PSI (130BAR) W.P. - 10152PSI (700BAR) B.P. - EN/1736/PED



**R-744 - F1/4" SAE (7/16-20UNF-2B)**

← 1500 mm ● **13.409**

**PAG**  
**LUBRICANTS**

**LUBRIFICANTI**  
**PAG**



P/N **11.406**

**PAG V. ISO 46**

Net content **1 liter**

**x12 pcs** - 33x28x25cm

**PAG based**  
**UV ADDITIVE**

**ADDITIVO UV**  
**base PAG**



P/N **11.404**

**PAG based**

Net content **250 ml**

**x12 pcs** - 34x24x18cm

# Scoline



## A/C BIO DETERGENT

Perfect for evaporators, ducts, filters and rods. It cleanses, eliminates the odors and leaves a scent of Citrus and Green tea.

Perfetto per evaporatori, canaline, filtri e bacchette. Deterge, elimina gli odori e rilascia un profumo di Citrus e The verde.



P/N **11.627**

**READY TO USE**

Net content **750 ml**

**x12 pcs** - 170x430x270cm



**NEW!**

P/N **11.638**

**B.O.V.**

Net content **250 ml**

**x24 pcs** - 170x430x270cm



P/N **11.629**

**READY TO USE**

Net content **750 ml**

**x12 pcs** - 170x430x270cm



**NEW!**

P/N **11.636**

**B.O.V.**

Net content **250 ml**

**x24 pcs** - 170x430x270cm

## ZERO ODOR

Perfect for neutralizing bad smells and cleansing all areas of the car.

Perfetto per neutralizzare i cattivi odori ed igienizzare tutti gli ambienti dell'automobile.

**NEW!****P/N 11.642****MIX B.O.V. AUTO****6x 11.638, 11.635, 11.634, 11.636****x24 pcs - 170x430x270cm**

# Scoline

## MR.LEATHER

Perfect for cleaning seats, headrests, side interiors, steering wheels and all the leather upholstery of the car.  
Leaves a scent of flowers of Iris.

Perfetto per la pulizia di sedili, poggiatesta, paratie laterali, volanti e tutti i rivestimenti in pelle dell'auto.  
Rilascia un dolce e fresco profumo di Iris.

**P/N 11.613****READY TO USE**Net content **750 ml****x12 pcs - 170x430x270cm****NEW!****P/N 11.634****B.O.V.**Net content **250 ml****x24 pcs - 170x430x270cm****P/N 11.612****READY TO USE**Net content **750 ml****x12 pcs - 170x430x270cm****NEW!****P/N 11.635****B.O.V.**Net content **250 ml****x24 pcs - 170x430x270cm**

## BEST FABRIC

Perfect for thoroughly cleansing any type of upholstery fabric passenger compartment (Mats, seats, parcel shelves, fabric hoods, etc.).  
Leaves a scent of flowers of Iris.

Perfetto per detergere e igienizzare a fondo ogni tipo di tessuto di rivestimento dell'abitacolo (tappetini, sedili, cappelliere, capote in tessuto ecc.).  
Rilascia un dolce e fresco profumo di Iris.

# cleaning of evaporator and ducts igienizzazione evaporatori e condotti

		
<p><b>P/N 11.023/1S</b>  <b>FOAM / SCHIUMOSO</b>                  Net content <b>100 ml</b>  <b>x12 pcs - 15x17x17cm</b></p>	<p><b>P/N 11.023/2S</b>  <b>FOAM / SCHIUMOSO</b>                  Net content <b>200 ml</b>  <b>x12 pcs - 22x17x18cm</b></p>	<p><b>P/N 11.020S</b>  <b>FOAM / SCHIUMOSO</b>                  Net content <b>400 ml</b>  <b>x12 pcs - 27x22x21cm</b></p>



P/N **11.020****LAVENDER / LAVANDA**Net content **400 ml**
**x12 pcs** - 27x22x21cm
P/N **11.020LI****LEMON / LIMONE**Net content **400 ml**
**x12 pcs** - 27x22x21cm
P/N **11.020M****MUSK / MUSCHIO**Net content **400 ml**
**x12 pcs** - 27x22x21cm

**400 ml SERIES**  
in 6 different  
fragrances

**SERIE 400 ml**  
in 6 diverse  
profumazioni

P/N **11.020ME****MINT / MENTA**Net content **400 ml**
**x12 pcs** - 27x22x21cm
P/N **11.020P****PINE / PINO**Net content **400 ml**
**x12 pcs** - 27x22x21cm
P/N **11.020V****VANILLA / VANIGLIA**Net content **400 ml**
**x12 pcs** - 27x22x21cm
P/N **11.023****LAVENDER / LAVANDA**Net content **50 ml**
**x32 pcs** - 30x15x14cm
P/N **11.023/1****LAVENDER / LAVANDA**Net content **100 ml**
**x12 pcs** - 15x17x17cm
P/N **11.020.500****LAVENDER / LAVANDA**Net content **500 ml**
**x12 pcs** - 27x22x25cm

**LAVENDER  
FRAGRANCE  
IN OTHER SIZES!  
50, 100 and 500  
ml SERIES**

**PROFUMAZIONE  
LAVANDA IN  
ALTRI FORMATI!  
SERIE 50, 100 e  
500 ml**



# interior car cleaning igienizzazione interni auto

Perfumed purifying spray for cleaning and purifying the passenger compartment.  
Spray igienizzanti profumati per la pulizia e l'igienizzazione dell'abitacolo.



P/N **11.024/1**

**LAVENDER / LAVANDA**

Net content **100 ml**

**x12 pcs** - 15x17x17cm



P/N **11.024/1LI**

**LEMON / LIMONE**

Net content **100 ml**

**x12 pcs** - 15x17x17cm



P/N **11.024/1M**

**MUSK / MUSCHIO**

Net content **100 ml**

**x12 pcs** - 15x17x17cm

**100 ml SERIES**  
in 6 different  
fragrances

**SERIE 100 ml**  
in 6 diverse  
profumazioni



P/N **11.024/1ME**

**MINT / MENTA**

Net content **100 ml**

**x12 pcs** - 15x17x17cm



P/N **11.024/1P**

**PINE / PINO**

Net content **100 ml**

**x12 pcs** - 15x17x17cm



P/N **11.024/1V**

**VANILLA / VANIGLIA**

Net content **100 ml**

**x12 pcs** - 15x17x17cm

P/N **11.024****LAVENDER / LAVANDA**Net content **200 ml**
**x12 pcs** - 22x17x18cm
P/N **11.024LI****LEMON / LIMONE**Net content **200 ml**
**x12 pcs** - 22x17x18cm
P/N **11.024M****MUSK / MUSCHIO**Net content **200 ml**
**x12 pcs** - 22x17x18cm

**200 ml SERIES**  
in 5 different  
fragrances

**SERIE 200 ml**  
in 5 diverse  
profumazioni

P/N **11.024P****PINE / PINO**Net content **200 ml**
**x12 pcs** - 22x17x18cm
P/N **11.024V****VANILLA / VANIGLIA**Net content **200 ml**
**x12 pcs** - 22x17x18cm
P/N **11.728****SMOKE / FUMO**Net content **200 ml**
**x12 pcs** - 22x17x18cm
P/N **11.729****PET / ANIMALI**Net content **200 ml**
**x12 pcs** - 22x17x18cm

**200 ml SERIES ODOR ELIMINATOR**  
PET and TOBACCO&SMOKE

**SERIE 200 ml ANTI-ODORE**  
ANIMALI e FUMO DI SIGARETTA

# complete cleaning treatment trattamento igienizzante completo



P/N **11.028**

**LAVENDER / LAVANDA**

Net content **2x 100 ml**

**x12 pcs** - 33x28x25cm

P/N **11.028V**

**VANILLA / VANIGLIA**

Net content **2x 200 ml**

**x6 pcs** - 33x28x25cm

**Evaporator + passenger compartment  
Evaporatore + abitacolo**

P/N **11.214**

**LAVENDER / LAVANDA**

P/N **11.214LI**

**LEMON / LIMONE**

P/N **11.214ME**

**MINT / MENTA**

P/N **11.214M**

**MUSK / MUSCHIO**

P/N **11.214P**

**PINE / PINO**

P/N **11.214V**

**VANILLA / VANIGLIA**



Net content **2x 100 ml**

**x12 pcs** - 33x28x25cm

**Evaporator FOAM + passenger compartment  
SCHIUMA evaporatore + abitacolo**

# condenser cleaning pulizia condensatori

Specific product for external cleaning of condensers of the A/C system. It thoroughly cleans the finned condenser coils from any kind of dirt. The HIGH PRESSURE version has been designed to clean more effectively and hard-to-reach places.

Prodotto specifico per la pulizia esterna dei condensatori dell'impianto A/C. Pulisce a fondo le batterie alettate dei condensatori da ogni tipo di sporco. La versione ALTA PRESSIONE è stata progettata per pulire con maggiore efficacia e punti difficili da raggiungere.

## CONDENSER CLEANER spray

## spray PULITORI CONDENSATORI



P/N **11.022**

Net content **400 ml**

**x12 pcs** - 27x22x21cm



P/N **11.022.500**

Net content **500 ml**

**x12 pcs** - 33x28x25cm



P/N **11.734**

**HIGH PRESSURE**

Net content **500 ml**

**x12 pcs** - 33x28x25cm





# visual diagnose diagnosi visiva

Ideal kit to perform a visual diagnosis of the system using a vitreous filter and check for any impurities such as the presence of moisture, sealants or tracers, gas and dirty lubricant.  
Kit ideale per eseguire una diagnosi visiva dell'impianto tramite filtro vitreo e verificare le eventuali impurità come presenza di umidità, di sostanze sigillanti o traccianti, di gas e di lubrificante sporco.



x1 pc - 53x13x42cm

P/N **13.084**

P/N **13.084YFK**



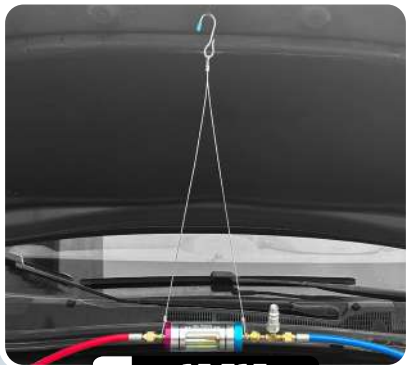
R-134a

## DIAWASH KIT



R-1234yf

x1 pc



P/N **13.717**

**Metal wire with hook**  
Laccio metallico con gancetto

### Spare parts / Parti di ricambio

x1 pc



P/N **13.079/1**

**Metal mesh filter spare part**  
Filtro di ricambio a maglia metallica

x1 pc



P/N **13.506**

**Sight glass with litmus paper**  
Vetro-spia con cartina tornasole



# R-134a / R-1234yf gas analyzer analizzatore gas R-134a / R-1234yf

The GAS CHECKER is an HFC R-134a and HFO R-1234yf refrigerant gas analyzer module.

This portable device is able to analyze the gas contained in an external cylinder or in the system of a car, establishing the degree of purity and any contaminants contained.

Il GAS CHECKER è un modulo analizzatore del gas refrigerante HFC R-134a e HFO R-1234yf.

Questo apparecchio portatile è in grado di analizzare il gas contenuto in una bombola esterna o nell'impianto di una vettura, stabilendo il grado di purezza e di eventuali contaminanti contenuti.



P/N 13.705



P/N 13.705/2

filter to retain impurities  
filtro per trattenere impurità



## TECHNICAL FEATURES:

- 3.5" graphic interface with multilingual software
- Dual power supply: 12V DC - 100 / 240V
- Standard printer
- Internal chamber flushing pump
- Purity standards both according to VDA regulations (ok - not ok >95%) and with percentage of R-134a or R-1234yf gas and contaminants
- Operative Temperature Range: 10°C - 50°C
- Analyzed gas: R-134a / R-1234yf
- Test duration: 60 sec (+ calibration)

## CARATTERISTICHE TECNICHE:

- Interfaccia grafica 3,5" con software multilingua
- Doppia alimentazione: 12V DC - 100/240V
- Stampante di serie
- Pompa di lavaggio camera interna
- Analisi purezza sia secondo normativa VDA (ok - not ok >95%) sia con percentuale di gas R-134a o R-1234yf e contaminanti
- Range Temperatura di funzionamento: 10°C - 50°C
- Gas analizzato: R-134a / R-1234yf
- Durata test: 60 sec (+ calibrazione)

## Included / Incluso



clamps and 220V AC/12V DC transformer  
pinze e trasformatore 220V AC/12V DC



R-134a cylinder connection  
Connessione a bombola R-134a



R-1234yf cylinder connection  
Connessione a bombola R-1234yf



# flushing / lavaggio



P/N **13.529**

**Pneumatic flushing unit**  
Macchina lavaggio **pneumatica**



**Internal tank:** 10 liter  
**Sizes:** 40x33x41 cm  
**Weight:** 10,5 Kg  
**Supply:** air  
**Max pressure:** 7 bars  
**Pneumatic pump**  
**Washable filter**

**Serbatoio interno:** 10 litri  
**Dimensioni:** 40x33x41 cm  
**Peso:** 10,5 Kg  
**Alimentazione:** aria  
**Pressione massima:** 7 bar  
**Pompa pneumatica**  
**Filtro lavabile**

*Supplied with the pneumatic flushing unit*  
*In dotazione con la macchina lavaggio pneumatica*



P/N **13.511** Conical adapter set (2 pcs) / Set di adattatori conici (2 pz)

P/N **Y13.124YT** 2x 1.8m yellow hose - F/F1/4" SAE (7/16-20UNF-2B).  
/ 2x tubo giallo 1.8m - F1/4" SAE (7/16-20UNF-2B).

P/N **13.526**

**Electric** flushing unit  
Macchina lavaggio **elettrica**



**Diagnostic function** with the sight glass;  
**Flushing pump:** max flow 50 liters, max pressure 4 bars

**Funzione diagnostica** con il vetro-spia;  
**Pompa per il lavaggio:** portata 50 litri; pressione max 4 bar



**Diagnostic function** with the sight glass;  
**Flushing pump:** max flow 50 liters, max pressure 4 bars

**Funzione diagnostica** con il vetro-spia;  
**Pompa per il lavaggio:** portata 50 litri; pressione max 4 bar

P/N **13.532**

**Electric** flushing unit  
Macchina lavaggio **elettrica**

*Supplied with the electric flushing units  
In dotazione con le macchine lavaggio elettriche*

P/N **13.511**

Conical adapter set (2 pcs) / Set di adattatori conici (2 pz)

P/N **/**

2x 2m transparent hose - F1/4" SAE (7/16-20UNF-2B) x 45° F1/4" SAE (7/16-20UNF-2B) with tap;  
1x 1m transparent hose - F1/4" SAE (7/16-20UNF-2B) x 45° F1/4" SAE (7/16-20UNF-2B) with tap;  
1x 1m transparent hose - F1/4" SAE (7/16-20UNF-2B) x F1/4" SAE (7/16-20UNF-2B).

2x tubo trasparente 2m - F1/4" SAE (7/16-20UNF-2B) x F1/4" SAE (7/16-20UNF-2B) 45° con rubinetto;  
1x tubo trasparente 1m - F1/4" SAE (7/16-20UNF-2B) x F1/4" SAE (7/16-20UNF-2B) 45° con rubinetto;  
1x tubo trasparente 1m - F1/4" SAE (7/16-20UNF-2B) x F1/4" SAE (7/16-20UNF-2B).

P/N **/**

10-liter plastic container / Tanica di plastica da 10 litri





P/N **11.035**

Net content **1 liter**

**x12 pcs** - 33x28x25cm



P/N **11.036**

Net content **5 liter**

**x2 pcs** - 32x28x21cm

**Not flammable  
A/C FLUSH**

Drying with nitrogen is required

**LIQUIDI  
di LAVAGGIO  
non infiammabili**

Necessaria asciugatura con azoto

**Flammable  
A/C FLUSH**

High evaporation!  
Don't use with electric equipment

**LIQUIDI  
di LAVAGGIO  
infiammabili**

Evaporazione rapida!  
Non usare con attrezzatura elettrica



P/N **11.035F**

Net content **1 liter**

**x12 pcs** - 33x28x25cm



P/N **11.036F**

Net content **5 liter**

**x2 pcs** - 32x28x21cm



P/N **11.227F**

Net content **25 liter**

**x1 pc**

**Spare parts  
Parti di ricambio**

P/N **11.713**

**CYLINDER / BOMBOLA**

Net content **600 ml**

**x12 pcs** - 28x22x30cm

P/N **11.714**

**HOSE and GUN  
TUBO e PISTOLA**

**x1 pc**



P/N **11.070**

**SPRAY**

Net content **500 ml**

**x12 pcs** - 28x22x30cm

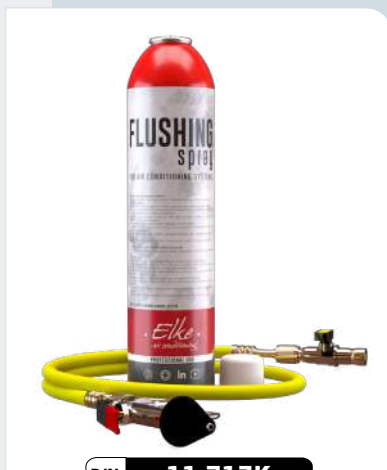


P/N **11.070.600**

**SPRAY**

Net content **600 ml**

**x12 pcs** - 28x22x30cm



P/N **11.713K**

**KIT SPRAY**

Net content **600 ml**

**x3 pcs**

P/N /

10 liter tank with connecting hose  
Tanica in plastica da 10 litri con tubo di collegamento

P/N **078.000**

Bin for collecting the outgoing liquid  
Bidone per la raccolta del liquido in uscita

P/N **13.201**

750 ml aluminium tank + hose and gun  
Serbatoio in alluminio + tubo e pistola

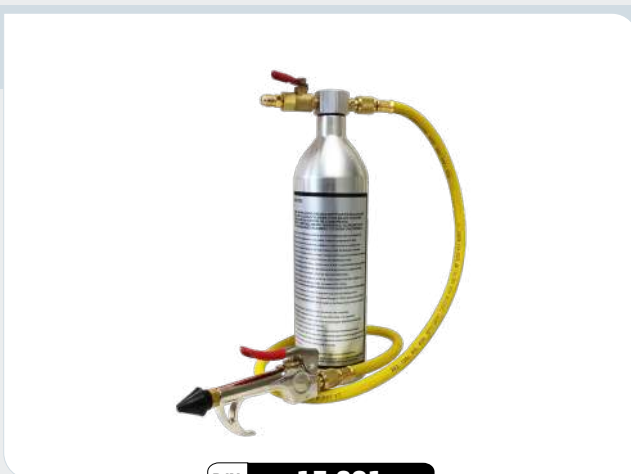
P/N **13.511**

Conical adapters set (2 pieces) / Set di adattatori conici (2 pezzi)

P/N **88.402**

## Flushing kit

### Kit lavaggio

P/N **13.201**

750 ml aluminium **flush** tank  
Serbatoio **lavaggio** in alluminio 750 ml

## Spare parts

### Parti di ricambio

P/N **13.124Y**

Yellow HOSE / TUBO giallo

1,5 m - F/F1/4" SAE  
(7/16-20UNF-2B)

P/N **13.099**

**FLUSH GUN**  
PISTOLA di LAVAGGIO





P/N **13.074**

## Wash & dry Nitrogen kit Kit Azoto lava & asciuga



P/N **13.200**

1 liter Nitrogen cylinder / Bombola Azoto 1 litro

P/N **13.203.20B**

20 bar pressure regulator for 1 liter cylinder  
Regolatore di pressione 20 bar per bombole 1 litro

P/N **13.201**

750 ml aluminium tank + hose and gun  
Serbatoio in alluminio + tubo e pistola

P/N **13.1058Y**

30 cm yellow hose - F1/4" SAE (7/16-20UNF-2B) x 90° F1/4" SAE (7/16-20UNF-2B)

Tubo giallo 30 cm - F1/4" SAE (7/16-20UNF-2B) x F1/4" SAE (7/16-20UNF-2B) 90°



P/N **13.200**

1 liter Nitrogen cylinder / Bombola Azoto 1 litro

P/N **13.203.20B**

20 bar pressure regulator for 1 liter cylinder  
Regolatore di pressione 20 bar per bombole 1 litro

P/N **13.099**

Flush gun / Pistola di lavaggio

P/N **13.124Y**

1,5 m yellow hose - F1/4" SAE (7/16-20UNF-2B) x F1/4" SAE (7/16-20UNF-2B)

Tubo giallo 1,5 m - F1/4" SAE (7/16-20UNF-2B) x F1/4" SAE (7/16-20UNF-2B)



P/N **13.527**

## Nitrogen kit for drying Kit Azoto per l'asciugatura

P/N **13.511**

Conical adapters set (2 pieces) / Set di adattatori conici (2 pezzi)

P/N **/**

30 cm yellow hose - F1/4" SAE x 90° F1/4" SAE  
Tubo giallo 30 cm - F1/4" SAE x F1/4" SAE 90°

P/N **88.214**

Adapter / Adattatore F/F1/4" SAE (7/16-20UNF-2B)

P/N **13.503**

Filter / Filtro Ø 58 mm x 119 mm  
M/M1/4" SAE (7/16-20UNF-2A)

P/N **13.614**

Ball valve / Valvola a sfera M/M1/4" SAE (7/16-20UNF-2A)

P/N **13.506**

Sight glass with litmus paper / Vetro-spia con cartina tornasole  
M/M1/4" SAE (7/16-20UNF-2A)



P/N **13.500B**

## Flushing components in suitcase Componenti per il lavaggio in valigetta

P/N **13.530**

### Flush & leak detection kit Kit lavaggio & ricerca fughe

P/N **13.200/2**

2.2-liter 100%-N2 cylinder / Bombola 100%-N2 2.2 litri

P/N **13.209/2**

2.2-liter 95%-N2 5%-H2 / Bombola 95%-N2 5%-H2 2.2 litri

P/N **13.201**750 ml aluminium tank + hose and gun  
/ Serbatoio in alluminio + tubo e pistolaP/N **13.203.20B**20 bar pressure regulator for 1 liter cylinder  
/ Regolatore di pressione 20 bar per bombole 1 litroP/N **88.217**

Adapter / Adattatore M1/4" SAE (7/16-20UNF-2A) x M12x1,5

P/N **13.080YF**HP quick coupler for R-1234yf x M12x1,5  
/ Attacco rapido AP per R-1234yf x M12x1,5P/N **13.034**HP quick coupler for R-134a x M1/4"SAE  
/ Attacco rapido AP per R-134a x M1/4" SAEP/N **13.512/1**Manifold gauge with hose / Manometro con tubo  
Gas: R-134a, R-1234yf, R-404A, R-407C, R-422D, R-507, R-22,  
R-32, R-410AP/N **13.124Y**1,5 mt yellow hose / Tubo giallo 1,5 mt - 2x F1/4" SAE  
(7/16-20UNF-2B) - Gas: R-134a, R-1234yf, R-404A, R-407C,  
R-422D, R-507, R-22, R-32, R-410AP/N **13.060**

### Conical adapter set Set di adattatori conici

P/N **13.511**

### Conical adapter set Set adattatori conici (2 pieces / pezzi)

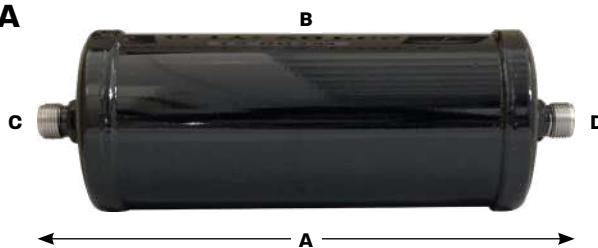
Sealing rubber cone (small)  
Cono di tenuta in gomma (piccolo)P/N **13.510/1**Sealing rubber cone (big)  
Cono di tenuta in gomma (grande)P/N **13.510/2**



# filters for charging stations filtri per stazioni di ricarica

(compatible with / compatibile con)

**ISC, ROBINAIR, TEXA**

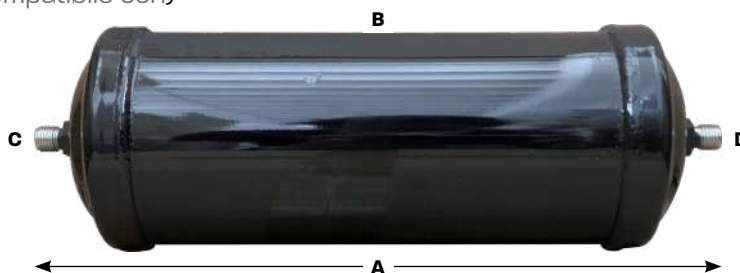


- A. 234 mm
- B. Ø 76 mm
- C. D. 3/8" OR

P/N **15.002W**

(compatible with / compatibile con)

**ROBINAIR, SPX**

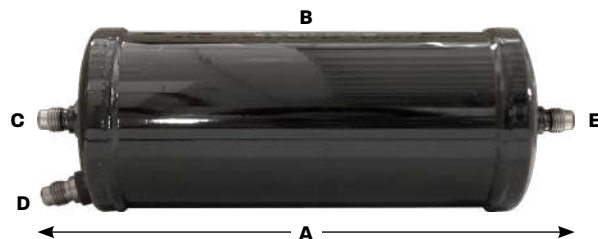


- A. 294 mm
- B. Ø 90 mm
- C. D. 1/4" OR

P/N **15.004W**

(compatible with / compatibile con)

**WIGAM, CTR**

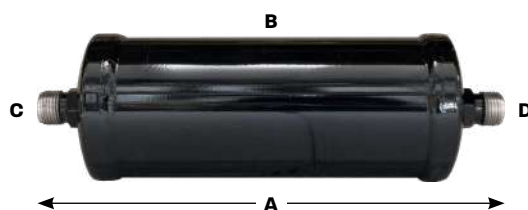


- A. 230 mm
- B. Ø 76 mm
- C. D. E. 1/4" flare / cono

P/N **15.005**

(compatible with / compatibile con)

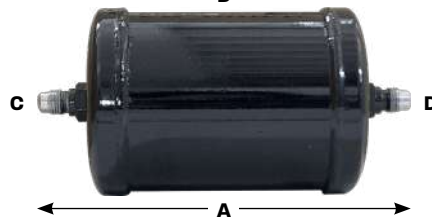
**ISC**



- A. 207 mm
- B. Ø 60 mm
- C. D. 3/8" OR

P/N **15.006W**

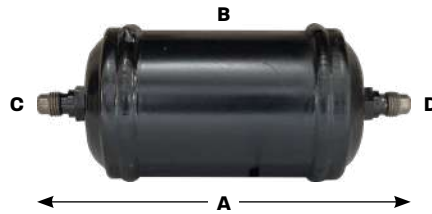
(compatible with / compatibile con)

**MAVRE, KRIOS, SPIN, ECOTECHNICS**

- A. 160 mm
- B. Ø 76 mm
- C. D. 1/4" flare / cono

P/N **15.007**

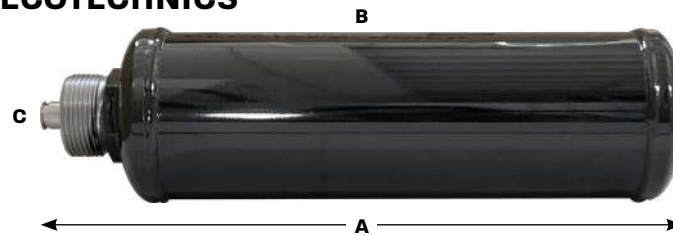
(compatible with / compatibile con)

**AIR SOLUTIONS, OKSYS**

- A. 158 mm
- B. Ø 60 mm
- C. D. 1/4" flare / cono

P/N **15.010**

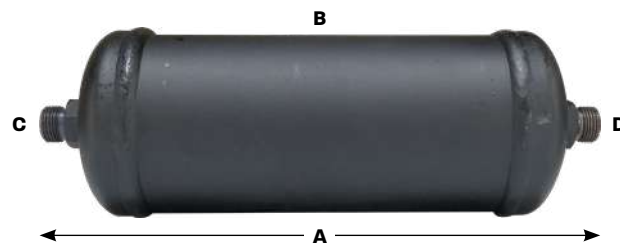
(compatible with / compatibile con)

**ROBINAIR, SPX, ECOTECHNICS**

- A. 290 mm
- B. Ø 76 mm
- C. 1-1/2"-12UNF-2A

P/N **15.011**

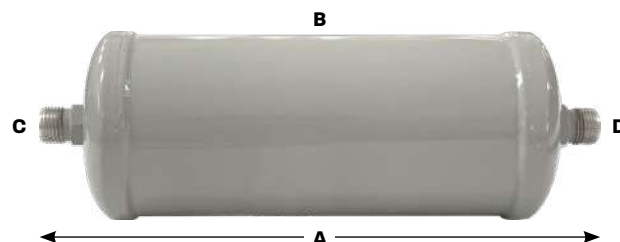
(compatible with / compatibile con)

**TEXA**

- A. 240 mm
- B. Ø 76 mm
- C. D. 3/8" OR

P/N **15.013W**

(compatible with / compatibile con)

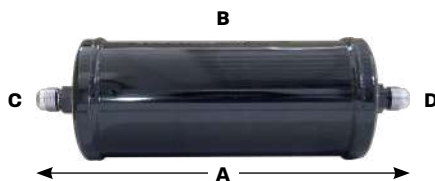
**TEXA**

- A. 238 mm
- B. Ø 76 mm
- C. D. 3/8" OR

P/N **15.014W**

(compatible with / compatibile con)

**BRAIN BEE - MAHLE**



- A. 160 mm
- B. Ø 76 mm
- C. D. 1/4" flare / cono

P/N **15.048**

(compatible with / compatibile con)

**BRAIN BEE - MAHLE**



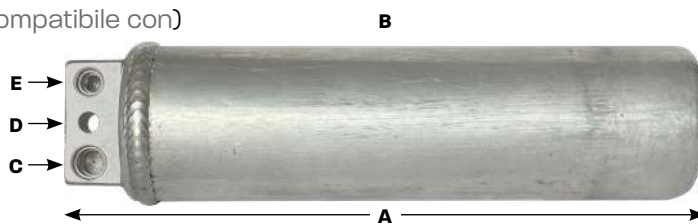
- A. 170 mm
- B. Ø 76 mm
- C. D. 3/8" flare / cono

P/N **15.050**



(compatible with / compatibile con)

**WAECO**



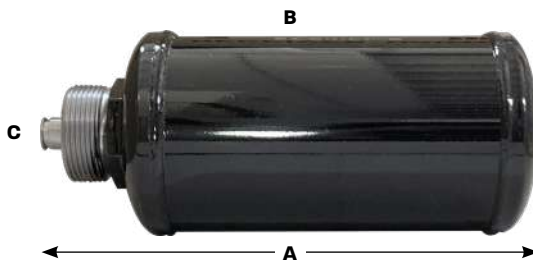
- A. 275 mm
- B. Ø 67 mm
- C. IN (Øxdeep) 13,7x3,5 mm / 11,7x8,0 mm / 10,0x6,9 mm
- D. Ø 9,02 mm (through / passante)
- E. OUT (Øxdeep) 10,6x3,4 mm / 8,6x5,7 mm / 7,0x10,2 mm

P/N **15.058**



(compatible with / compatibile con)

**BOSCH**



- A. 213 mm
- B. Ø 76 mm
- C. 1-3/8"-12UNF-2A

P/N **15.059**





# filter maintenance kit kit manutenzione filtri



P/N 20.4002 + P/N 11.075 + P/N 15.???

Select the filter you need for your charging station and find the relevant kit P/N.

Seleziona il filtro che ti occorre per la tua stazione di ricarica e trova il relativo P/N del kit.

1x Filter / Filtro P/N 15.010



P/N 88.801

1x Filter / Filtro P/N 15.005



P/N 88.802

1x Filter / Filtro P/N 15.007



P/N 88.800

1x Filter / Filtro P/N 15.004W



P/N 88.803

1x Filter / Filtro P/N 15.006W



P/N 88.804

1x Filter / Filtro P/N 15.002W



P/N 88.805

2x Filter / Filtro P/N 15.010



P/N 88.806

1x Filter / Filtro P/N 15.013W



P/N 88.809

1x Filter / Filtro P/N 15.011



P/N 88.810

1x Filter / Filtro P/N 15.014W



P/N 88.811



# hoses tubazioni

**R-134a:** 800PSI (55BAR) W.P. - 4000PSI (275BAR) B.P. - SAE J2196  
**R-1234yf:** 800PSI (55BAR) W.P. - 4000PSI (275BAR) B.P. - SAE J2888

## hoses for R-1234yf / tubi per R-1234yf



### SAE J2888 - M12x1,5 (YF) x M12x1,5 (YF)

←→ 2500 mm	● Y13.1026BYF	● Y13.1026RYF
←→ 3000 mm	● Y13.102B	● Y13.102R
←→ 4500 mm	● Y13.198B	● Y13.198R
←→ 5000 mm	● Y13.1242B	● Y13.1242R
←→ 6000 mm	● Y13.1010BYF	● Y13.1010RYF



### SAE J2888 - F14x1,5 (ACME) x M12x1,5 (YF)

←→ 2500 mm	● Y13.1013BYF	● Y13.1013RYF
←→ 3000 mm	● Y13.1014B	● Y13.1014R
←→ 3500 mm	● Y13.1251B	● Y13.1251R

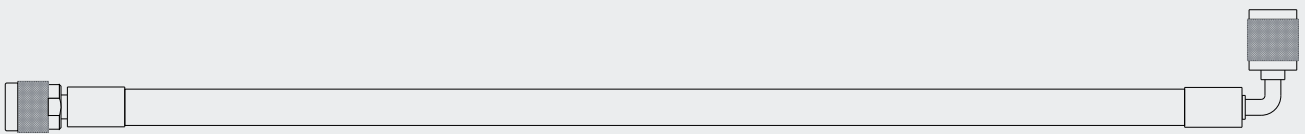


### SAE J2888 - F1/4" SAE (7/16-20UNF-2B) x M12x1,5 (YF)

←→ 2500 mm	● 13.103BYF	● 13.103RYF
←→ 3000 mm	● 13.111BYF	● 13.111RYF
←→ 3500 mm	● Y13.184B	● Y13.184R
←→ 4000 mm	● 13.102BYF	● 13.102RYF
←→ 5000 mm	● Y13.143B	● Y13.143R
←→ 6000 mm	● Y13.1037B	● Y13.1037R
←→ 7500 mm	● Y13.1038B	● Y13.1038R

hoses for **R-134a** / tubi per **R-134a****SAE J2196 - F1/4" SAE (7/16-20UNF-2B) x F1/4" SAE (7/16-20UNF-2B)**

↔ 2500 mm	● <b>13.103B</b>	● <b>13.103R</b>
↔ 3000 mm	● <b>13.111B</b>	● <b>13.111R</b>
↔ 3500 mm	● <b>13.1081B</b>	● <b>13.1081R</b>
↔ 4000 mm	● <b>13.102B</b>	● <b>13.102R</b>
↔ 5000 mm	● <b>13.194B</b>	● <b>13.194R</b>
↔ 6000 mm	● <b>13.134BT</b>	● <b>13.134RT</b>
↔ 7500 mm	● <b>13.1054B</b>	● <b>13.1054R</b>

**SAE J2196 - F1/4" SAE (7/16-20UNF-2B) x 90° F1/4" SAE (7/16-20UNF-2B)**

↔ 2500 mm	● <b>13.149B</b>	● <b>13.149R</b>
↔ 3000 mm	● <b>13.112B</b>	● <b>13.112R</b>
↔ 4000 mm	● <b>13.170B</b>	● <b>13.170R</b>
↔ 5000 mm	● <b>13.1064B</b>	● <b>13.1064R</b>
↔ 6000 mm	● <b>13.1063B</b>	● <b>13.1063R</b>
↔ 7500 mm	● <b>13.1179B</b>	● <b>13.1179R</b>

**SAE J2196 - F14x1,5 (ACME) x M14x1,5 (ACME)**

↔ 2500 mm	● <b>13.126B</b>	● <b>13.126R</b>
↔ 3000 mm	● <b>13.189B</b>	● <b>13.189R</b>
↔ 3500 mm	● <b>13.1239B</b>	● <b>13.1239R</b>
↔ 4000 mm	● <b>13.166B</b>	● <b>13.166R</b>
↔ 5000 mm	● <b>13.1033B</b>	● <b>13.1033R</b>
↔ 6000 mm	● <b>13.143BNT</b>	● <b>13.143RNT</b>

**SAE J2196 - F1/4" SAE (7/16-20UNF-2B) x M14x1,5 (ACME)**

↔ 3000 mm	● <b>13.1144B</b>	● <b>13.1144R</b>
↔ 3500 mm	● <b>13.1238B</b>	● <b>13.1238R</b>
↔ 5000 mm	● <b>13.1040B</b>	● <b>13.1040R</b>
↔ 6000 mm	● <b>13.1141B</b>	● <b>13.1141R</b>



# gas polymerization polimerizzazione gas



x1 pc - 53x13x42cm

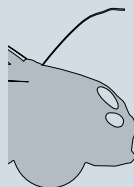
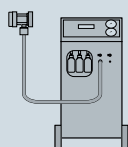
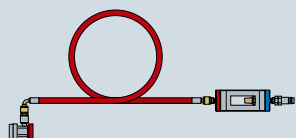
P/N **13.010**

## ELKE A/C RECOVERY GUARD

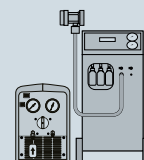
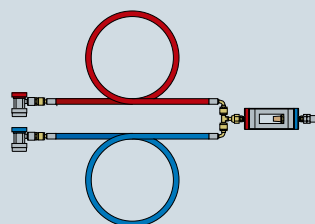
- P/N 13.079S** Pirex One vitreous filter / Filtro vitreo Pirex One
- P/N Y13.147B** 1,0 mt blue hose - F1/4" SAE (7/16-20UNF-2B) x 90° F1/4" SAE (7/16-20UNF-2B)  
Tubo blu 1,0 mt - F1/4" SAE (7/16-20UNF-2B) x F1/4" SAE (7/16-20UNF-2B) 90°
- P/N Y13.147R** 1,0 mt red hose - F1/4" SAE (7/16-20UNF-2B) x 90° F1/4" SAE (7/16-20UNF-2B)  
Tubo blu 1,0 mt - F1/4" SAE (7/16-20UNF-2B) x F1/4" SAE (7/16-20UNF-2B) 90°
- P/N 88.010YF** R-1234yf LP adapter x F1/4" SAE (7/16-20UNF-2B) / Adattatore BP R-1234yf x F1/4" SAE (7/16-20UNF-2B)
- P/N 13.080YF** R-1234yf HP quick coupler with tap x 90° F12x1,5 adapter  
Attacco rapido AP R-1234yf con tappo x adattatore F12x1,5 90°
- P/N 13.081YF** R-1234yf LP quick coupler with tap x 90° F12x1,5 adapter  
Attacco rapido BP R-1234yf con tappo x adattatore F12x1,5 90°
- P/N 88.650** "T" adapter - M1/4" SAE (7/16-20UNF-2A) x M1/4" SAE (7/16-20UNF-2A) x F1/4" SAE (7/16-20UNF-2B)  
Attacco a "T" - M1/4" SAE (7/16-20UNF-2A) x M1/4" SAE (7/16-20UNF-2A) x F1/4" SAE (7/16-20UNF-2B)
- 2x P/N 88.217** M12x1,5 x M1/4" SAE (7/16-20UNF-2A) adapter / Adattatore M12x1,5 x M1/4" SAE (7/16-20UNF-2A)
- P/N 88.214** F1/4" SAE (7/16-20UNF-2A) x F1/4" SAE (7/16-20UNF-2A) adapter  
Adattatore F1/4" SAE (7/16-20UNF-2A) x M1/4" SAE (7/16-20UNF-2A)
- P/N 13.614** M1/4" SAE (7/16-20UNF-2A) x F1/4" SAE (7/16-20UNF-2B) ball valve  
Valvola a sfera M1/4" SAE (7/16-20UNF-2A) x F1/4" SAE (7/16-20UNF-2B)



System charge / Carica impianto




Refrigerant recovery / Recupero refrigerante



**ELKE A/C RECOVERY GUARD and ELKE A/C CHARGE PROTECTOR - AUTO** were developed with the aim of protect equipment and A/C systems from the phenomenon of **HFO R-1234yf gas polymerization**.

**ELKE A/C RECOVERY GUARD e ELKE A/C CHARGE PROTECTOR - AUTO** sono stati sviluppati per proteggere le attrezzature e gli impianti A/C dal fenomeno della **polimerizzazione del gas HFO R-1234yf**.




 **x1 pc** - 10x5,2x21cm

**P/N 13.010LC**

### ELKE A/C CHARGE PROTECTOR - AUTO

**P/N 13.079S**

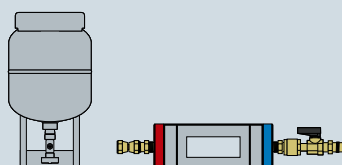
Pirex One vitreous filter / Filtro vitreo Pirex One

**P/N 88.214**

F1/4" SAE (7/16-20UNF-2A) x F1/4" SAE (7/16-20UNF-2A) adapter  
Adattatore F1/4" SAE (7/16-20UNF-2A) x M1/4" SAE (7/16-20UNF-2A)

**P/N 13.614**

M1/4" SAE (7/16-20UNF-2A) x F1/4" SAE (7/16-20UNF-2B) ball valve  
Valvola a sfera M1/4" SAE (7/16-20UNF-2A) x F1/4" SAE (7/16-20UNF-2B)



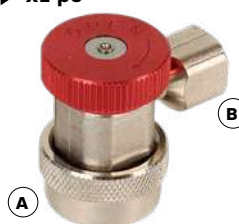
System charge / Carica impianto →





R-1234yf

x1 pc



A. HP / AP R-1234yf  
B. F12x1,5

P/N 13.080YF

x1 pc



A. LP / BP R-1234yf  
B. F12x1,5

P/N 13.081YF

x1 pc



A. HP / AP R-1234yf  
B. F12x1,5  
C. M12x1,5  
D. M1/4" SAE

P/N 13.058HYF

x1 pc



A. LP / BP R-1234yf  
B. F12x1,5  
C. M12x1,5  
D. M1/4" SAE

P/N 13.058LYF

x1 pc



A. HP / AP R-1234yf  
B. M1/4" SAE

P/N 13.023HYF

x1 pc



A. LP / BP R-1234yf  
B. M1/4" SAE

P/N 13.023LYF

x1 pc



A. HP / AP R-1234yf  
B. HP / AP R-1234yf

P/N 13.038YF

RENAULT / FORD

x1 pc

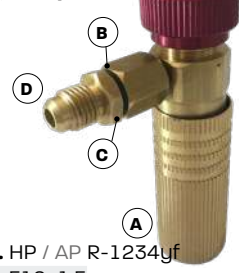


A. LP / BP R-1234yf  
B. LP / BP R-1234yf

P/N 13.039YF

RENAULT / FORD

x1 pc



A. HP / AP R-1234yf  
B. F12x1,5  
C. M12x1,5  
D. M1/4" SAE

P/N 13.020YF

BMW

x1 pc



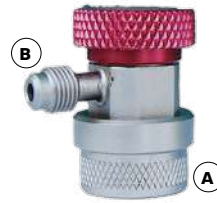
A. HP (AP) R-1234yf  
B. LP (BP) R-1234yf

P/N 13.095YF

RENAULT

## R-134a

x1 pc



A. HP / AP R-134a  
B. M1/4" SAE

P/N 13.034

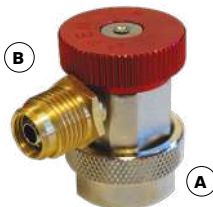
x1 pc



A. LP / BP R-134a  
B. M1/4" SAE

P/N 13.035

x1 pc



A. HP / AP R-134a  
B. M3/8" SAE

P/N 13.080G

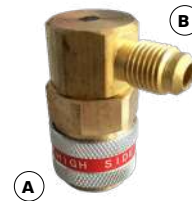
x1 pc



A. LP / BP R-134a  
B. M3/8" SAE

P/N 13.081G

x1 pc



A. HP / AP R-134a  
B. M1/4" SAE

P/N 13.036

x1 pc



A. LP / BP R-134a  
B. M1/4" SAE

P/N 13.037

x1 pc



A. HP / AP R-134a  
B. M1/4" SAE

P/N 13.038

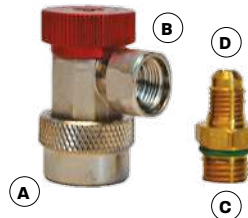
x1 pc



A. LP / BP R-134a  
B. M1/4" SAE

P/N 13.039

x1 pc



A. HP / AP R-134a  
B. F14x1,5  
C. M14x1,5  
D. M1/4" SAE

P/N 13.080

x1 pc



A. LP / BP R-134a  
B. F14x1,5  
C. M14x1,5  
D. M1/4" SAE

P/N 13.081

x1 pc



A. HP / AP R-134a  
B. F14x1,5  
C. M14x1,5  
D. M1/4" SAE

P/N 13.047H

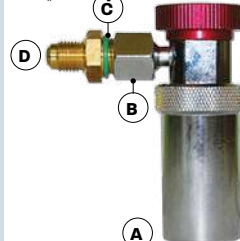
x1 pc



A. LP / BP R-134a  
B. F14x1,5  
C. M14x1,5  
D. M1/4" SAE

P/N 13.047L

x1 pc



A. HP / AP R-134a  
B. F14x1,5  
C. M14x1,5  
D. M1/4" SAE

P/N 13.038D

BMW

x1 pc



A. HP / AP R-134a  
B. LP (BP) R-134a

P/N 13.095

RENAULT

**BRANDED PREMIUM QUALITY - PARKER**

x1 pc



A. HP / AP R-134a  
B. F14x1,5

P/N **13.262**

x1 pc



A. LP / BP R-134a  
B. F14x1,5

P/N **13.263**

**R-134a**

x1 pc



A. HP / AP R-1234yf  
B. F12x1,5

P/N **13.270YF**

x1 pc



A. LP / BP R-1234yf  
B. F12x1,5

P/N **13.269YF**

**R-1234yf**

**PREMIUM QUALITY**

x1 pc



A. HP / AP R-134a  
B. Tap / Rubinetto  
C. HP / AP R-134a

P/N **13.045**

x1 pc



A. LP / BP R-134a  
B. Tap / Rubinetto  
C. LP / BP R-134a

P/N **13.046**

**R-134a**

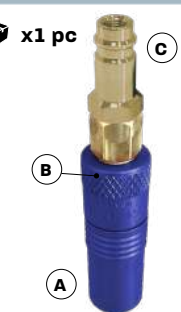
x1 pc



A. HP / AP R-1234yf  
B. Tap / Rubinetto  
C. HP / AP R-1234yf

P/N **13.045YF**

x1 pc



A. LP / BP R-1234yf  
B. Tap / Rubinetto  
C. LP / BP R-1234yf

P/N **13.046YF**

**R-1234yf**





**small tools / minuteria**



**ADAPTERS for quick couplers**  
**ADATTATORI per attacchi rapidi**



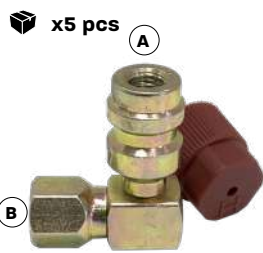
**A.** LP / BP R-134a  
**B.** F1/4" SAE

P/N **88.010/5**



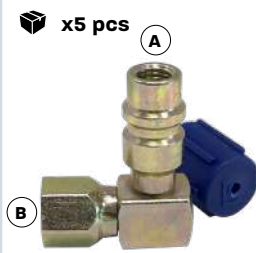
**A.** HP / AP R-134a  
**B.** F1/4" SAE

P/N **88.011/5**



**A.** HP / AP R-134a  
**B.** F1/4" SAE

P/N **88.042/5**



**A.** LP / BP R-134a  
**B.** F1/4" SAE

P/N **88.043/5**



**A.** HP / AP R-134a  
**B.** F3/16" SAE

P/N **88.272/5**



**A.** HP / AP R-134a  
**B.** F3/16" SAE

P/N **88.273/5**

R-134a



**A.** HP / AP R-134a  
**B.** M15x1

P/N **88.123/5**



**A.** LP / BP R-134a  
**B.** M13x1

P/N **88.125/5**



**A.** LP / BP R-134a  
**B.** M10x1.25 (Ford)

P/N **88.126/5**



**A.** HP / AP R-134a  
**B.** M12x1.25 (Ford, GM, Chrysler)

P/N **88.128/5**



**A.** LP / BP R-1234yf  
**B.** F1/4" SAE

P/N **88.010YF/5**



**A.** HP / AP R-1234yf  
**B.** F1/4" SAE

P/N **88.011YF/5**



**A.** HP / AP R-1234yf  
**B.** M15x1

P/N **88.123YF/5**



**A.** HP / AP R-1234yf  
**B.** M13x1

P/N **88.125YF/5**

R-1234yf



## CAPS for charging valves TAPPI per valvole di carica

x5 pcs



LP / BP  
M8x1

P/N **88.008/5**

x5 pcs



HP / AP  
M8x1

P/N **88.009/5**

x5 pcs



1/4" SAE

P/N **88.093/5**

x5 pcs



Short thread / Filetto corto  
M8x1 - R-1234yf

P/N **88.230/5**

x5 pcs



Long thread / Filetto lungo  
M8x1 - R-1234yf

P/N **88.231/5**

x5 pcs



LP / BP  
M9x1

P/N **88.094/5**

x5 pcs



HP / AP  
M10x1.25

P/N **88.095/5**

x5 pcs



3/16" SAE

P/N **88.096/5**

x5 pcs



M9x1 - R-1234yf

P/N **88.232/5**

x5 pcs



M10x0.75

P/N **88.097/5**

x5 pcs



M8x1

P/N **88.098/5**

x5 pcs



HP / AP  
M10x1

P/N **88.099/5**

x5 pcs



M10x0.75 - R-1234yf

P/N **88.233/5**

x5 pcs



LP / BP  
M8x1

P/N **88.100/5**

x5 pcs



LP / BP  
M9x1

P/N **88.101/5**

x5 pcs



HP / AP  
M10x1.25

P/N **88.102/5**

x5 pcs



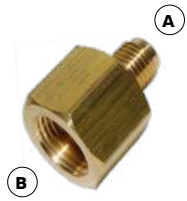
M10x1.25 - R-1234yf

P/N **88.234/5**

R-134a

R-1234yf

**x5 pcs**



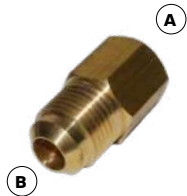
**A.** M1/4" SAE  
**B.** F3/8" SAE

**P/N 88.135/5**

**ADAPTERS  
ADATTATORI**



**x5 pcs**



**A.** F1/4" SAE  
**B.** M3/8" SAE

**P/N 88.142/5**

**x5 pcs**



**A.** M1/4" SAE  
**B.** M14x1,5

**P/N 88.210/5**

**x5 pcs**



**A.** M18NPT  
**B.** M1/4" SAE

**P/N 88.211/5**

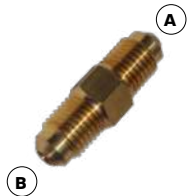
**x5 pcs**



**A.** M1/4" SAE  
**B.** M12x1,5

**P/N 88.217/5**

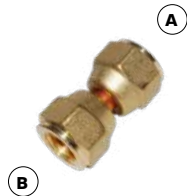
**x5 pcs**



**A.** M1/4" SAE  
**B.** M1/4" SAE

**P/N 88.212/5**

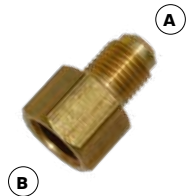
**x5 pcs**



**A.** F1/4" SAE  
**B.** F1/4" SAE

**P/N 88.214/5**

**x5 pcs**



**A.** M1/4" SAE  
**B.** F1/2 ACME

**P/N 88.216/5**

**x5 pcs**



**A.** M3/8" SAE  
**B.** M12x1,5

**P/N 88.218/5**

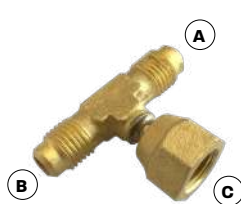
**x1 pc**



**A.B.** M1/4" SAE  
**C.** F1/4" SAE

**P/N 88.412**

**x5 pcs**



**A.B.** M1/4" SAE  
**C.** F1/4" SAE

**P/N 88.650/5**

**x5 pcs**

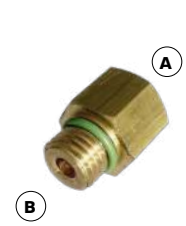


**A.** M1/4NPT  
**B.** M1/4" SAE

**P/N 88.652/5**

**NEW!**

**x5 pcs**



**A.** F14x1,5  
**B.** M12x1,5

**P/N 88.227/5**

**R-1234yf**

## CYLINDER ADAPTERS ADATTATORI BOMBOLA

Spare parts  
Parti di ricambio

R-134a

x5 pcs



A. M1/4" SAE  
B. W21.8-14

P/N 88.072/5

x10 pcs



square section  
sezione squadrata

P/N 88.072T/10

x5 pcs



A. M1/4" SAE  
B. 1/2 ACME L (left / sinistro)

P/N 88.183/5

x1 pc



A. LP / BP (R-1234yf)  
B. 1/2 ACME L (left / sinistro)

P/N 88.277

DUPONT

x1 pc



A. HP / AP (R-1234yf)  
B. 1/2 ACME L (left / sinistro)

P/N 88.277H

DUPONT

R-1234yf

x1 pc



A. LP / BP (R-1234yf)  
B. 0.5 inch - 16 ACME-2G-L (left / sinistro)

P/N 88.278

HONEYWELL

x1 pc



A. HP / AP (R-1234yf)  
B. 0.5 inch - 16 ACME-2G-L (left / sinistro)

P/N 88.278H

HONEYWELL

x1 pc

*cylinders put on market  
from July 2015!!  
bombole messe in commercio  
da Luglio 2015!!*



A. LP / BP (R-1234yf)  
B. W21.8-1/14"L (left / sinistro)

P/N 88.289

UNIVERSAL

x1 pc

*cylinders put on market  
from July 2015!!  
bombole messe in commercio  
da Luglio 2015!!*



A. HP / AP (R-1234yf)  
B. W21.8-1/14"L (left / sinistro)

P/N 88.289H

UNIVERSAL

1:1



**STD. HNBR O-RINGS**  
O-RING in HNBR STD.

STD. G6/8/10/12

x10 pcs



G6

P/N 88.001/10

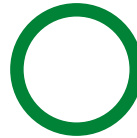
x10 pcs



G8

P/N 88.003/10

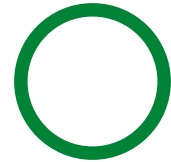
x10 pcs



G10

P/N 88.002/10

x10 pcs



G12

P/N 88.004/10

x10 pcs



P/N 88.020/10

x10 pcs



P/N 88.162/10

x10 pcs



P/N 88.016/10

x10 pcs



P/N 88.014/10

x10 pcs



P/N 88.024/10

x10 pcs



P/N 88.113/10

x10 pcs



P/N 88.075/10

x10 pcs



P/N 88.139/10

x10 pcs



P/N 88.110/10

x10 pcs



P/N 88.019/10

x10 pcs



P/N 88.021/10

x10 pcs



P/N 88.015/10



P/N **13.086**

**O-Ring pick / Attrezzo toglie O-Ring**

**x10 pcs**



P/N **88.068/10**

**x10 pcs**



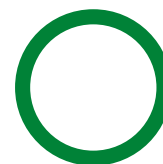
P/N **88.013/10**

**x10 pcs**



P/N **88.018/10**

**x10 pcs**



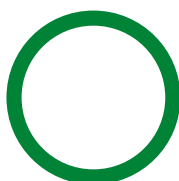
P/N **88.153/10**

**x10 pcs**



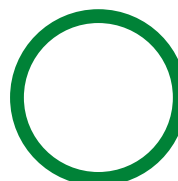
P/N **88.060/10**

**x10 pcs**



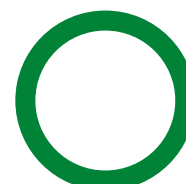
P/N **88.077/10**

**x10 pcs**



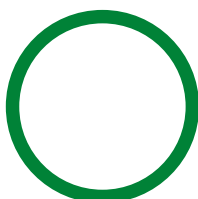
P/N **88.018G/10**

**x10 pcs**



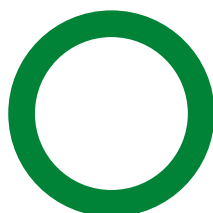
P/N **88.118/10**

**x10 pcs**



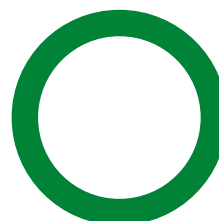
P/N **88.152/10**

**x10 pcs**



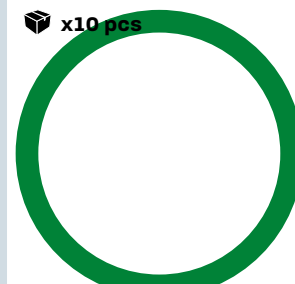
P/N **88.017/10**

**x10 pcs**



P/N **88.155/10**

**x10 pcs**



P/N **88.047/10**



1:1



**SPECIAL SEALING GASKETS**  
**GUARNIZIONI di TENUTA SPECIALI**

DOUBLE LIP / DOPPIO LABBRO

x10 pcs



section / sezione

P/N **88.006/10**

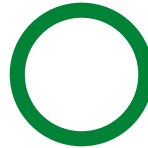
x10 pcs



section / sezione

P/N **88.005/10**

x10 pcs



section / sezione

P/N **88.007/10**

x10 pcs

Peugeot / Citroën  
6460P0



section / sezione

P/N **88.026/10**

x10 pcs

Peugeot / Citroën  
6460P1



section / sezione

P/N **88.027/10**

x10 pcs

Renault 1-7001207274



section / sezione

P/N **88.028/10**

x10 pcs

Renault 2-7001207274



section / sezione

P/N **88.029/10**

x10 pcs

Renault 3-7001207274



section / sezione

P/N **88.030/10**

x5 pcs



section / sezione

P/N **88.034B/5**

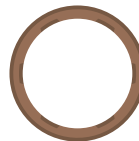
x5 pcs



section / sezione

P/N **88.033B/5**

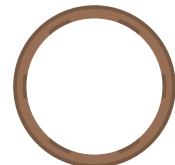
x5 pcs



section / sezione

P/N **88.032B/5**

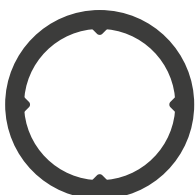
x5 pcs



section / sezione

P/N **88.031B/5**

x10 pcs



section / sezione

P/N **88.161/10**

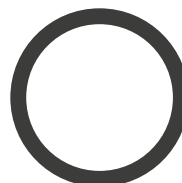
x10 pcs



section / sezione

P/N **88.257/10**

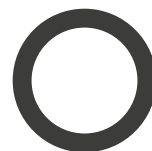
x10 pcs



section / sezione

P/N **88.258/10**

x10 pcs



section / sezione

P/N **88.259/10**

MOULDED / SAGOMATI

## SPRING LOCK



## SPRING LOCK COUPLER TOOL ATTREZZO di SGANCIAMENTO SPRING LOCK





**SEALING WASHERS  
GUARNIZIONI COMPRESSORE**

**x10 pcs**



Short / Corto  
Harrison

**P/N 88.080/10**

**x10 pcs**



Long / Lungo  
Harrison

**P/N 88.081/10**

**x10 pcs**



Ø 8 mm  
Ø 11,3 mm  
GM

**P/N 88.082/10**

**x10 pcs**



Ø 15 mm  
Ø 23,6 mm  
GM

**P/N 88.083/10**

**x10 pcs**



Ø 11 mm  
Ø 19,5 mm  
GM

**P/N 88.084/10**

**x10 pcs**



Ø 17 mm  
Ø 25,5 mm  
GM

**P/N 88.085/10**

**x10 pcs**



5/8"  
Ø 15 mm  
Ø 28 mm  
GM

**P/N 88.086/10**

**x10 pcs**



Ø 15,2 mm  
Ø 29,6 mm  
GM / Harrison

**P/N 88.087/10**

**x10 pcs**



Ø 16,6 mm  
Ø 28 mm  
GM / Harrison

**P/N 88.088/10**

**x10 pcs**



Ø 15,7 mm  
Ø 33,5 mm  
Harrison

**P/N 88.089/10**

**x10 pcs**



3/4"  
Ø 17,7 mm  
Ø 31,6 mm  
GM

**P/N 88.091/10**

**x10 pcs**



Ø 15,7 mm  
Ø 30 mm  
GM / Harrison

**P/N 88.122/10**

## ORIFICE TUBES / VALVOLE a SIGARETTA

**x10 pcs**

blue / blu  
Ford, Mazda, Nissan



P/N **88.050/10**

**x10 pcs**

grey / grigia  
Audi, Toyota



P/N **88.051/10**

**x10 pcs**

yellow / gialla  
Volvo



P/N **88.052/10**

**x10 pcs**

white / bianca  
Fiat, GM, Audi, Alfa Romeo



P/N **88.053/10**

**x10 pcs**

brown / marrone  
Ford



P/N **88.054/10**

**x10 pcs**

black / nera  
Opel, GM



P/N **88.055/10**

**x10 pcs**

purple / viola  
Chrysler, Dodge, Eagle



P/N **88.056/10**

**x10 pcs**

orange / arancione  
Ford, Dodge, Jeep, Hyundai



P/N **88.057/10**

**x10 pcs**

red / rossa  
Ford, Mazda



P/N **88.058/10**

**x10 pcs**

green / verde  
Ford, Jeep, Mazda, Chrysler



P/N **88.059/10**

### ORIFICE TUBE KIT

(2 of each orifice tube / 2 di ogni valvola a sigaretta)

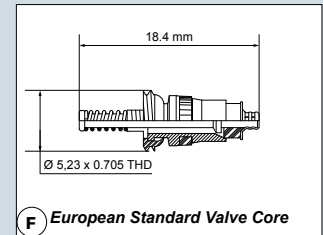
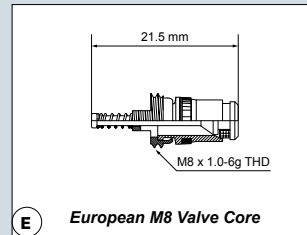
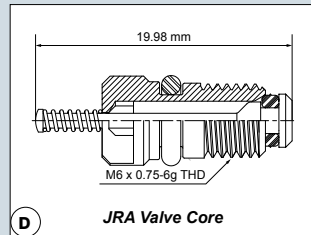
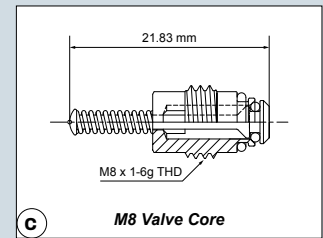
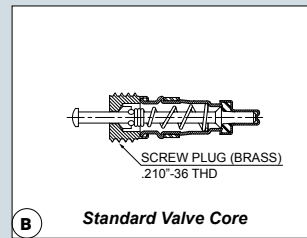
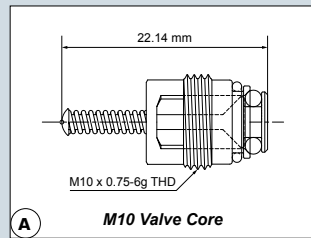


**x1 pc** - 20x29x5cm

P/N **88.200**

**SCHRADER VALVE CORE / VALVOLINE A/C**

technicals  
specifiche



**x10 pcs**



Type / Tipo: B  
R12

**P/N 88.012/10**

**x10 pcs**



Type / Tipo: E  
Peugeot (R-134a)

**P/N 88.022/10**

**x10 pcs**



Type / Tipo: D  
Highflow

**P/N 88.023/10**

**x10 pcs**



M6x1  
Opel (R-134a)

**P/N 88.039/10**

**x10 pcs**



Type / Tipo: C  
PM (R-134a)

**P/N 88.040/10**

**x10 pcs**



Type / Tipo: A  
GM (R-134a)

**P/N 88.041/10**

**x10 pcs**



Type / Tipo: F  
Renault (R-134a)

**P/N 88.270/10**

**x10 pcs**



M8x1  
Audi/BMW (R-134a)

**P/N 88.271/10**

**x10 pcs**



Type / Tipo: D  
Hyundai/Kia

**P/N 88.276/10**

**x10 pcs**



Type / Tipo: E  
VW (R-134a)

**P/N 88.241/10**

**x10 pcs**



Type / Tipo: B  
PM (R-1234yf)

**P/N 88.291/10**

**x10 pcs**



Type / Tipo: C  
R-1234yf

**P/N 88.292/10**

**x10 pcs**



Type / Tipo: A  
R-1234yf

**P/N 88.293/10**

**x10 pcs**



M8x1  
R-1234yf

**P/N 88.296/10**

**x10 pcs**



Type / Tipo: F  
GM (R-1234yf)

**P/N 88.298/10**

**x10 pcs**



Type / Tipo: D  
R-1234yf

**P/N 88.299/10**

R-1234yf



**A/C VALVE CORE REMOVING TOOLS / ATTREZZI SVITAVALVOLE**

Valve core removing tool / Attrezzo svitavalvole a spillo

**P/N 13.051**

Valve core removing tool / Attrezzo svitavalvole a spillo

**P/N 13.054**

**Valve removing tool**  
with insert for HP and LP quick coupling  
**Estrattore valvole a spillo**  
con inserto per attacco attacco rapido AP e BP

**x1 pc****P/N 13.053****COMPRESSORS BEARINGS / CUSCINETTI COMPRESSORE****x1 pc****P/N 88.400**

Ø (int) 25 mm  
Ø (est) 55 mm  
thickness / spessore: 20 mm

**P/N 88.401**

Ø (int) 40 mm  
Ø (est) 62 mm  
thickness / spessore: 24 mm

**P/N 88.405**

Ø (int) 30 mm  
Ø (est) 55 mm  
thickness / spessore: 23 mm

**HNBR O-RINGS KIT**  
**KIT O-RING in HNBR**



**x1 pc** - 18x12x3cm

**P/N 88.180**

**SPECIAL SEALING GASKET KIT**  
**KIT GUARNIZIONI SPECIALI**



**x1 pc** - 18x12x3cm

**P/N 88.190**

**SEALING WASHERS KIT**  
**KIT DISTANZIALI**



**x1 pc** - 18x12x3cm

**P/N 88.700**

## VALVE CORE KIT KIT VALVOLINE



**x1 pc** - 18x12x3cm

**P/N 88.205**

## R-1234yf VALVE CORE and CAPS KIT KIT VALVOLINE e TAPPI per R-1234yf



**x1 pc** - 20x29x5cm

**P/N 88.322**

## SPRINGLOCK KIT



**x1 pc** - 20x29x5cm

**P/N 88.904/1**

**NATIONAL VEHICLES KIT**  
**KIT VETTURE NAZIONALI**

**FRENCH VEHICLES KIT**  
**KIT VETTURE FRANCESI**



**x1 pc** - 20x29x5cm

**P/N 88.312**

**GERMAN VEHICLES KIT**  
**KIT VETTURE TEDESCHE**



**x1 pc** - 20x29x5cm

**P/N 88.313**



## ASIAN VEHICLES KIT KIT VETTURE ASIATICHE



**x1 pc** - 20x29x5cm

**P/N 88.314**



## ITALIAN VEHICLES KIT KIT VETTURE ITALIANE



**x1 pc** - 20x29x5cm

**P/N 88.315**

## AMERICAN VEHICLES KIT KIT VETTURE AMERICANE

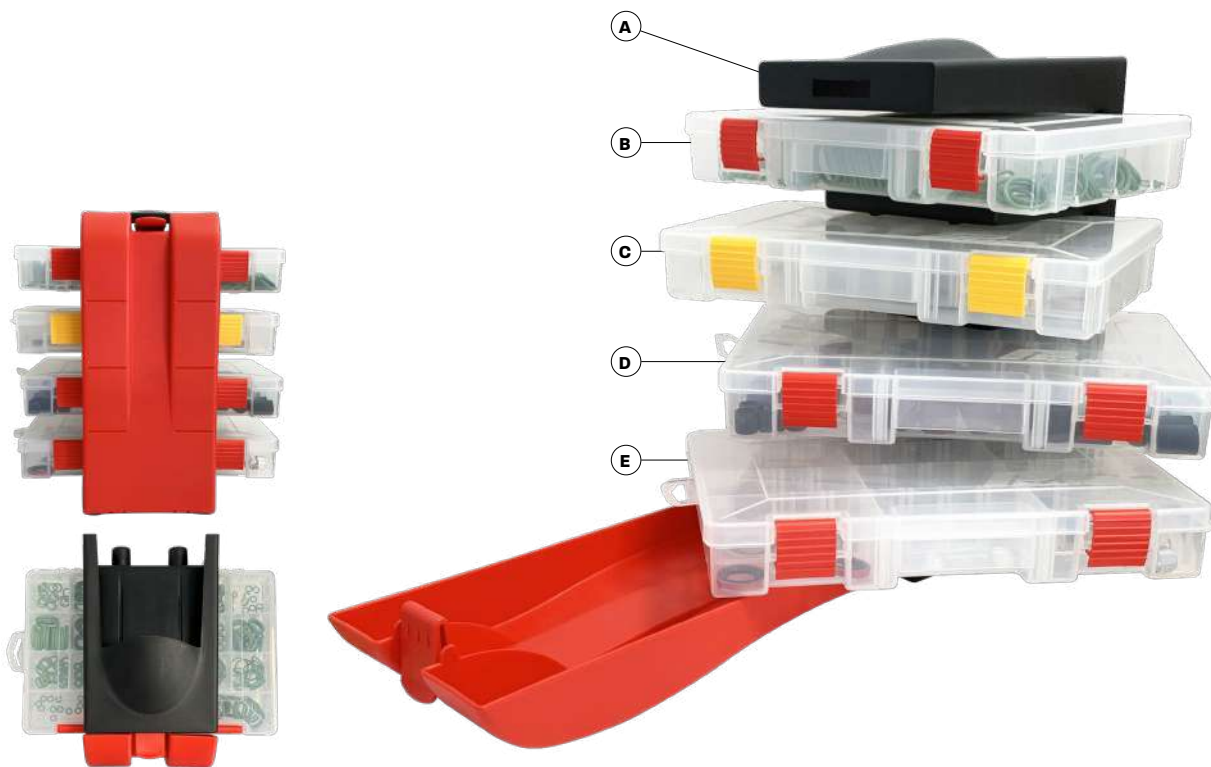


**x1 pc** - 20x29x5cm

**P/N 88.316**



**ORGANIZER KIT**



**x1 pc** - 30x33x46cm

**P/N 88.900**

- A P/N 070.009S** Organizer tower / Torretta organizer
- B P/N 88.901** HNRB O-Rings kit / Kit O-Ring in HNBR
- C P/N 88.902** Special sealing gasket kit / Kit guarnizioni speciali
- D P/N 88.903** Tools kit / Kit minuteria
- E P/N 88.904** Sealing washers kit / Kit distanziali

**HNBR O-RINGS KIT**  
KIT O-RING in HNBR



**P/N 88.901**

**x1 pc** - 20x29x5cm

## SPECIAL SEALING GASKET KIT KIT GUARNIZIONI SPECIALI



**x1 pc** - 20x29x5cm

P/N **88.902**



## TOOLS KIT KIT MINUTERIA

**x1 pc** - 20x29x5cm

P/N **88.903**

## SEALING WASHERS KIT KIT DISTANZIALI



**x1 pc** - 20x29x5cm

P/N **88.904**



**R-134a  
R-1234yf**

analog, dry  
analogico, a secco  
ø 80 mm - 1/8 NPT



P/N **13.623**



P/N **13.624**



**R-134a  
R-1234yf**

analog, dry  
analogico, a secco  
ø 80 mm - 1/8 NPT

**Pressure gauges  
Manometri**



**R-134a  
R-1234yf**

analog, dry  
analogico, a secco  
ø 80 mm  
3x M1/4" SAE  
(7/16-20UNF-2A)



P/N **13.032**

**2-way manifold  
Gruppo manometrico a 2 vie**



P/N **13.033**

**4-way manifold  
Gruppo manometrico a 4 vie**



**R-134a  
R-1234yf**

analog, dry  
analogico, a secco  
ø 80 mm  
4x M1/4" SAE  
(7/16-20UNF-2A)



## 2-way manifold kit

### Kit gruppo manometrico a 2 vie

**R-134a** ❄️

**P/N 13.032K**

2-way manifold gauge / Gruppo manometrico a 2 vie **P/N 13.032**

R-134a HP quick coupler with tap x M1/4" SAE (7/16-20UNF-2A) adapter **P/N 13.034**  
 Attacco rapido AP R-134a con rubinetto x adattatore M1/4" SAE (7/16-20UNF-2A)

R-134a LP quick coupler with tap x M1/4" SAE (7/16-20UNF-2A) adapter **P/N 13.035**  
 Attacco rapido BP R-134a con rubinetto x adattatore M1/4" SAE (7/16-20UNF-2A)

3x 1,8 mt (B,R,Y) hose / tubo - F1/4" SAE (7/16-20UNF-2B) x 45° F1/4" SAE (7/16-20UNF-2B) **P/N TB.0012K**

**R-1234yf** ❄️

**P/N 13.032YFK**

2-way manifold gauge / Gruppo manometrico a 2 vie **P/N 13.032**

R-1234yf HP quick coupler with tap x F12x1,5 adapter **P/N 13.080YF**  
 Attacco rapido AP R-1234yf con rubinetto x adattatore F12x1,5

R-1234yf LP quick coupler with tap x F12x1,5 adapter **P/N 13.081YF**  
 Attacco rapido BP R-1234yf con rubinetto x adattatore F12x1,5

2x 1,8 mt (B,R) hose / tubo - F1/4" SAE (7/16-20UNF-2B) x M12x1,5 **P/N /**  
 1x 1,8 mt (Y) hose / tubo - F1/4" SAE (7/16-20UNF-2B) x F1/4" SAE (7/16-20UNF-2B)

## 4-way manifold kit

### Kit gruppo manometrico a 4 vie



**P/N 13.033K**

**R-134a** ❄️

**P/N 13.033**

4-way manifold gauge / Gruppo manometrico a 4 vie

**P/N 13.034**

R-134a HP quick coupler with tap x M1/4" SAE (7/16-20UNF-2A) adapter  
 Attacco rapido AP R-134a con rubinetto x adattatore M1/4" SAE (7/16-20UNF-2A)

**P/N 13.035**

R-134a LP quick coupler with tap x M1/4" SAE (7/16-20UNF-2A) adapter  
 Attacco rapido BP R-134a con rubinetto x adattatore M1/4" SAE (7/16-20UNF-2A)

**P/N TB.0012K**

3x 1,8 mt (B,R,Y) hose / tubo - F1/4" SAE (7/16-20UNF-2B) x 45° F1/4" SAE (7/16-20UNF-2B)

**P/N 13.033YFK**

**R-1234yf** ❄️

**P/N 13.033**

4-way manifold gauge / Gruppo manometrico a 4 vie

**P/N 13.080YF**

R-1234yf HP quick coupler with tap x F12x1,5 adapter  
 Attacco rapido AP R-1234yf con rubinetto x adattatore F12x1,5

**P/N 13.081YF**

R-1234yf LP quick coupler with tap x F12x1,5 adapter  
 Attacco rapido BP R-1234yf con rubinetto x adattatore F12x1,5

**P/N /**

2x 1,8 mt (B,R) hose / tubo - F1/4" SAE (7/16-20UNF-2B) x M12x1,5  
 1x 1,8 mt (Y) hose / tubo - F1/4" SAE (7/16-20UNF-2B) x F1/4" SAE (7/16-20UNF-2B)



# recovery-recycle / recupero-riciclo



## Recovery unit Recuperatore

R-134a \*  
R-1234yf

3/4HP

**Sparkless ignition proof**  
Refrigerant gas and oil **recovery/recycle**

**A prova di accensione senza scintilla**  
**Recupero/riciclo** gas e olio refrigeranti

\* complete list / elenco completo:

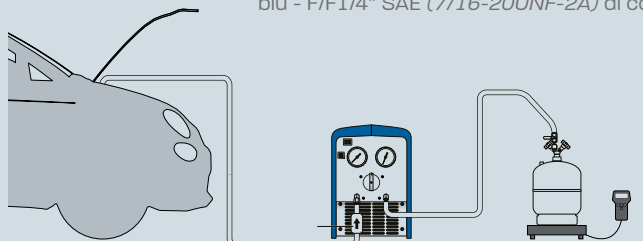
Category / Categoria A: **R12, R134a, R401C, R406A, R500, R1234yf**  
 Category / Categoria B: **R22, R401A, R401B, R402B, R407C, R407D, R408A, R409A, R411A, R411B, R412A, R502, R509**  
 Category / Categoria C: **R402A, R404A, R407A, R407B, R410A, R507, R32**

**P/N 12.621V**

### Supplied with / In dotazione

- P/N 13.124V**
- P/N /**

1,5 m yellow hose - F/F1/4" SAE (7/16-20UNF-2B)  
 Tubo giallo 1,5 m - F/F1/4" SAE (7/16-20UNF-2B)  
 Filter drier  $\phi$  50 mm - M/M1/4" SAE (7/16-20UNF-2A) with blue hose - F/F1/4" SAE (7/16-20UNF-2A) for connection to recovery unit.  
 Filtro disidratatore  $\phi$  50 mm - M/M1/4" SAE (7/16-20UNF-2A) con tubo blu - F/F1/4" SAE (7/16-20UNF-2A) di collegamento al recuperatore.



Refrigerant recovery / Recupero refrigerante →

*You might also be interested in*  
*Ti potrebbe interessare anche*



**P/N 12.031**

## Electronic scale Bilancia elettronica

0 ~ 100 Kg



## Vacuum pump Pompa del vuoto

- P/N 12.613**  
42 L/min  
1/4 HP
- P/N 12.612**  
70 L/min  
1/3 HP
- P/N 12.614**  
170 L/min  
3/4 HP



**DUAL STAGE  
BISTADIO**



**R-134a  
R-1234yf**



**P/N 12.604**

## Solenoid and vacuum gauge Elettrovalvola e vacuometro

for all models / per tutti i modelli

vacuum  
vuoto



**P/N 20.3003**  
V. ISO 32

Net content 1 liter

**x12 pcs - 33x28x25cm**



**P/N 20.2003**  
V. ISO 46

Net content 1 liter

**x12 pcs - 33x28x25cm**



**P/N 20.4003**  
V. ISO 68

Net content 1 liter

**x12 pcs - 33x28x25cm**

**lubricants**  
for  
**VACUUM  
PUMPS**

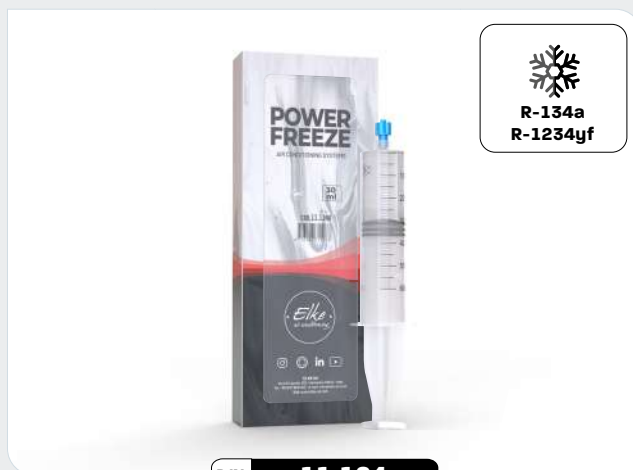
**lubrificanti**  
per  
**POMPE da  
VUOTO**

# Power Freeze

## A/C enhancer

**Power Freeze** and **CONCENTRATED Power Freeze** increase the fluidity of the oil, reduce energy consumption and improve the efficiency of the refrigeration system, bringing the system back to high performance levels.

**Power Freeze** e **CONCENTRATED Power Freeze** aumentano la fluidità dell'olio, diminuiscono il consumo energetico e migliorano l'efficienza del sistema refrigerante, riportando l'impianto ad alti livelli prestazionali.



P/N **11.124**

### Power Freeze

Net content **30 ml**

**x10 pcs** - 27x22x21cm

P/N **11.124K**

### Power Freeze

+adapter:  
**1x 11.800/60P**

P/N **11.124YFK**

### Power Freeze

+adapter:  
**1x 11.800/60YF**

Refrigerant quantity Quantità refrigerante	Power Freeze
-> 1 Kg	30 ml (1 syringe / siringa)
1 Kg -> 3 Kg	60 ml (2 syringes / siringhe)



P/N **11.129**

### CONCENTRATED Power Freeze

Net content **6 ml**

**x10 pcs** - 21x16x19cm

P/N **11.129K**

CONC. Power Freeze

+adapter:  
**1x 11.800/60P**

P/N **11.129YFK**

CONC. Power Freeze

+adapter:  
**1x 11.800/60YF**

Refrigerant <b>quantity</b> Quantità refrigerante	CONCENTRATED <b>Power Freeze</b>
-> 1 Kg	6 ml (1 syringe / siringa)
1 Kg -> 3 Kg	12 ml (2 syringes / siringhe)

### Syringe ADAPTERS

### ADATTATORI per siringa



**A.** R-134a

**B.** Chek valve / valvola di non-ritorno

P/N **11.800/60P**



R-134a



**A.** R-1234yf

**B.** Chek valve / valvola di non-ritorno

P/N **11.800/60YF**



R-1234yf



P/N **12.021**

Digital **pen thermometer** with probe  
**Termometro** digitale a penna con sonda

	°C / °F
1.5Vdc	t(°C): -50 ~ +300 t(°F): -58 ~ +572
Auto-off Autospegnimento	+/-1°C (-20°C~+80°C)



P/N **12.026**

Digital **thermometer** with probe  
**Termometro** digitale con sonda

	°C / °F
1.5Vdc	t(°C): -50 ~ +300 t(°F): -58 ~ +572
90 cm Cable length Lunghezza cavo	+/-1°C (-20°C~+80°C)



P/N **12.022**

Infrared **thermometer**  
**Termometro** a raggi infrarossi

	Operating T. / T. funzionamento °C (0 ~ +50) / °F (+32 ~ +122)
1.5Vdc	Storage T. / T. stoccaggio °C (-20 ~ +60) / °F (-4 ~ +140)
(D:S) 13:1	Op. Humidity / Umidità. funz. 10 ~ 95% RH
IR t(°C): -50 ~ +550 IR t(°F): -58 ~ +1022	St. Humidity / Umidità. stoc. <80% RH



P/N **12.028**

Digital **thermo hygrometer**  
**Termoigrometro** digitale

	°C / °F
1.5Vdc	t(°C) IN: -30 ~ +50 t(°F) IN: -22 ~ +122
Humidity / Umidità 20-99%	t(°C) OUT: -50~+70 t(°F) OUT: -58 ~ +158



P/N **13.752**

**Ozon generator**  
**Ozonizzatore**

*Spare parts*  
*Parti di ricambio*



P/N **13.752/1**

**Ozon plate**  
**Piastra di Ozono**



ACTIVE OXYGEN / OSSIGENO ATTIVO  
**4000 mg/h**

**202 x 148 x H 150**  
**mm**

**DC 12V**

POWER CONSUMPTION / CONSUMO ENERGETICO  
**40W**

**2,0 Kg**

**AC110-230V**  
**50-60Hz**

AIR VOLUME / VOLUME ARIA  
**max 80 CFM (2.24 m3/min)**

*Refills / Ricariche*

P/N **13.703L**

**120 ml - lavender / lavanda**

**x12 pcs - 21x16x19cm**

P/N **13.703M**

**120 ml - musk / muschio**

**x12 pcs - 21x16x19cm**

P/N **13.703P**

**120 ml - pine / pino**

**x12 pcs - 21x16x19cm**

purifying liquids / liquidi igienizzanti



P/N **13.703**

**Nebulizer**  
**Nebulizzatore**



NOISE LEVEL / LIVELLO RUMORE  
**< 70 dBA**

**285 x 210 x H 130**  
**mm**

**230V**  
**50-60Hz +/-10%**

ATOMIZED LIQUID / LIQUIDO NEBULIZZATO  
**+/- 500 ml/h**

**3,1 Kg**

ABSORBED CURRENT / CORRENTE ASSORBITA  
**0,15 Amps**



**x1 pc**



Length / Lunghezza: 9,15 m  
Width / Larghezza: 50 mm  
Thickness / Spessore: 5 mm

**P/N 11.038SP**

**Tar cork tape**  
**Rotolo di prestitute**

**x1 pc**



Length / Lunghezza: 15 m  
Width / Larghezza: 50 mm  
Thickness / Spessore: 3 mm

**P/N 11.037**

**Anti condensation tape**  
**Rotolo anti condensa**

**HYDRAULIC CRIMPING TOOL**

with a complete set of inserts sizes  
#6, #8, #10 and #12

**CRIMPATRICE IDRAULICA**

con un set completo di inserti di misura  
#6, #8, #10 e #12

**x1 pc**



**P/N 13.075**

**x1 pc**



**P/N 13.052**

**Hose cutter** (for rubber hoses)  
**Taglia-tubi** (per tubi in gomma)

**x1 pc**



8, 9, 10, 12, 14, 15  
fins per inch / alette per pollice

**P/N 13.050**

**Fin straightener**  
**Pettine per alette**

not only air conditioning





P/N **77.008**

**FAP/DPF cleaning KIT**

KIT pulizia **FAP/DPF**

**x1 pc** - 30x33x46cm

P/N **77.007**

+

P/N **77.003**

+

P/N **77.004**



P/N **77.007**

**DISPENSER  
EROGATORE**

**WASHING liquid**  
Liquido di  
**LAVAGGIO**



P/N **77.003**

Net content **5 liters**

**x2 pcs** - 34x20x28cm



P/N **77.004**

**RINSE liquid**  
Liquido di  
**RISCIACQUO**

Net content **5 liters**

**x2 pcs** - 34x20x28cm



**EGR VALVE**  
cleaner  
Pulitore  
**VALVOLE EGR**



P/N **11.320**

**SPRAY**

Net content **400 ml**

**x12 pcs** - 27x21x21cm



P/N **11.316**

**SPRAY**

Net content **500 ml**

**x12 pcs** - 27x21x25cm

**THROTTLE BODY**  
cleaner  
Pulitore **CORPI**  
**FARFALLATI**

**AUTOMATIC GEARBOXES** washing liquid  
Liquido lavaggio **CAMBI AUTOMATICI**



P/N **11.310**

Net content **1 liter**

**x12 pcs** - 33x28x28cm



# standard terms and conditions of sale condizioni generali di vendita

All orders must be sent by email.

The minimal value of each order, or addition to an order in progress, must be equal to € 100,00. If the minimum value is not reached, an extra charge of € 25,00 is foreseen. Unless otherwise agreed, orders will be processed according to the current price on their issuing date. A possible change in the selling price will be communicated before sending the order confirmation. Any delay in payments will cause the suspension of the orders in progress, until regular payment of the amount due is made.

#### **Shipping terms**

Unless otherwise expressly stated in an Order, all prices have to be consider Ex-Works.

#### **Returning goods**

The Customer shall inspect the goods upon delivery. Any complaint for missing or damaged goods must be notified in writing within 5 days from receipt. Complaints received after this deadline will not be taken into account. All returns must be authorized in writing by ELKE.

All goods must be returned in original packaging, completed in all its parts and be in resalable condition except for warranty returns. Any damage to the packaging and/ or product or the mismatch in the number of packages shall be immediately notified, "WITHDRAWAL SUBJECT TO INSPECTION" written on the proof of delivery courier, if possible with photos attached. Goods should be returned EX-works, specifying on the delivery note "Returned material for inspection" as purpose of the shipment.

#### **Warranty**

The legal warranty is valid for 12 months from the invoice date and, under no circumstances, cannot be suspended or extended as a result of the non-use of the product.

Warranty does not apply in the following cases:

- a) incorrect use of the product;
- b) incorrect connection and/or assembly of the products with other machinery, systems or products;
- c) incorrect maintenance or storage of the product.

Tutti gli ordini devono essere inviati in forma elettronica.

Il valore minimo di ogni ordine, o aggiunta ad ordine in corso, deve essere pari a € 100,00 (IVA esclusa). Per ordini con importo inferiore a tale cifra verrà addebitato un costo di gestione di € 25,00.

Salvo accordi particolari gli ordini verranno evasi secondo i prezzi in vigore alla loro data di emissione. Elke si riserva la facoltà di modificare i prezzi applicati fino alla conferma scritta dell'ordine inviato. Ogni ritardo di pagamento genererà automaticamente la sospensione degli ordini in corso sino ad avvenuta regolarizzazione della posizione.

#### **Spedizione**

Salvo diverso accordo, tutti i prezzi sono da intendersi Franco nostro stabilimento.

#### **Resa merce**

Avarie, mancanze o danni occorsi durante il trasporto devono essere contestati al corriere al momento della consegna. Il danno va indicato per iscritto in modo chiaro e, ove possibile, supportato da materiale fotografico. La semplice riserva di controllo non ha valore a fini risarcitori.

Ogni reclamo per merce mancante o non conforme all'ordine deve essere notificato per iscritto entro 5 gg dal ricevimento. Reclami giunti oltre tale termine non potranno essere presi in considerazione.

I resi saranno soggetti ad autorizzazione scritta preventiva da parte di Elke.

Il materiale dovrà essere reso in Porto Franco con causale "reso per controllo" completamente integro e completo in ogni sua parte. In ogni caso non saranno accettate restituzioni di materiale autorizzazione scritta da parte di Elke.

#### **Garanzia**

La garanzia legale ha una durata di 12 mesi dalla data di fatturazione e non può in nessun caso essere sospesa o prolungata in conseguenza del mancato utilizzo dei prodotti.

La garanzia decade al verificarsi delle seguenti condizioni:

- a) non corretto e/o non diligente utilizzo dei prodotti;
- b) non corretto e/o non diligente collegamento e/o assemblaggio dei Prodotti con altri prodotti, impianti o macchinari;
- c) non corretta e/o non diligente manutenzione o stoccaggio dei prodotti.





